

www.dieci.com



**DIECI**



**ZEUS EVO2**



**Dieci S.r.l.**  
Via E. Majorana, 2-4  
42027 - Montecchio Emilia (RE) ITALY  
Tel. +39 0522 869611  
Fax +39 0522 869798  
E-mail: info@dieci.com



40.7



38.8



38.10

| PERFORMANCE                     | 40.7  | 38.8  | 38.10 |
|---------------------------------|-------|-------|-------|
| Maximum capacity (kg)           | 4.000 | 3.800 | 3.800 |
| Maximum lifting height (m)      | 7,20  | 7,60  | 9,60  |
| Maximum horizontal outreach (m) | 3,90  | 4,30  | 6,10  |
| Outreach at maximum height (m)  | 0,60  | 0,75  | 0,56  |
| Fork swivelling angle           | 146°  | 146°  | 146°  |
| Pull-out force (daN)            | 5.700 | 5.700 | 5.700 |
| Towing force (daN)              | 6.000 | 6.000 | 6.000 |
| Maximum climb angle             | 40%   | 40%   | 40%   |
| Total weight when empty (kg)    | 7.800 | 7.900 | 8.150 |
| Max speed (km/h) *              | 40    | 40    | 40    |

\* = referred to wheels having the maximum allowable diameter

| BOOM                          | 40.7 | 38.8 | 38.10 |
|-------------------------------|------|------|-------|
| Times (when empty/in seconds) |      |      |       |
| Lifting                       | 7,3  | 7,2  | 8,7   |
| Descending                    | 3,8  | 3,7  | 5,0   |
| Extension                     | 5,2  | 5,5  | 7,6   |
| Retraction                    | 2,9  | 3,1  | 4,6   |
| Forward swivel                | 2,7  | 2,7  | 2,7   |
| Backward swivel               | 1,7  | 1,6  | 1,6   |

Patented compensation system

## ENGINE

|  |                                |
|--|--------------------------------|
| Model:                                     | Kubota                         |
| Maximum power kW (hp):                     | 85 (114)                       |
| Revolutions per minute (rpm):              | 2600                           |
| Operation:                                 | 4-stroke diesel                |
| Injection:                                 | Electronic direct, Common Rail |
| Number and arrangement of cylinders:       | 4, vertical in line            |
| Displacement (cm <sup>3</sup> ):           | 3769                           |
| Specific consumption at 2600 rpm (g/kWh)*: | 227                            |
| Exhaust gas after treatment system         | DPF (Stage 3B / Tier 4i)       |
|  | Aftercooler turbo compressor   |
| * at maximum power                         | Liquid cooling system          |

## HYDRAULIC SYSTEM

|  |                             |
|--|-----------------------------|
| Gear pump with max speed capacity (lt/1'): | 170                         |
| Max operating pressure (bar):              | 240                         |
| Distributor control with joystick:         | 4 in 1 electro-proportional |

## DIFFERENTIAL AXLES

|  |
|--|
| Steering axles: 2, with planetary reduction gears        |
| Steering types: 4-wheel / transversal / 2-wheel          |
| Front axle: fixed  |
| Rear axle: oscillating                                   |
| Oil bath service braking on the 4 wheels and servo brake |
| Negative action parking brake                            |

## REFUELLING (Litres)

|                          |     |
|--------------------------|-----|
| Hydraulic system (total) | 140 |
| Diesel tank              | 160 |

## OPTIONALS AND ACCESSORIES

A/C; Water heaters; Pneumatic suspension seat; Light on boom head; LED work lights; Quick coupling for accessories; Radio; Anti-theft system; Window protection; Transverse leveling.

(For additional customizations, contact the local dealer)

## TRANSMISSION

Hydrostatic transmission with variable displacement pump.  
Hydrostatic motor with automatic speed control and continuously variable transmission (0-40 km/h).  
Electrical - hydraulic reversing.  
Inching pedal for controlled advancement.

## STANDARD DEVICES

Anti-tipping device with pejorative movement block.  
Hydraulic socket for any accessories on the boom head.  
Soundproof closed cab, ROPS-FOPS approved, with heating.  
Self-blocking differential front axle (limited slip 45%).  
Electric window winder.  
LCD Display - Digital speedometer.  
High efficiency cyclone filter.

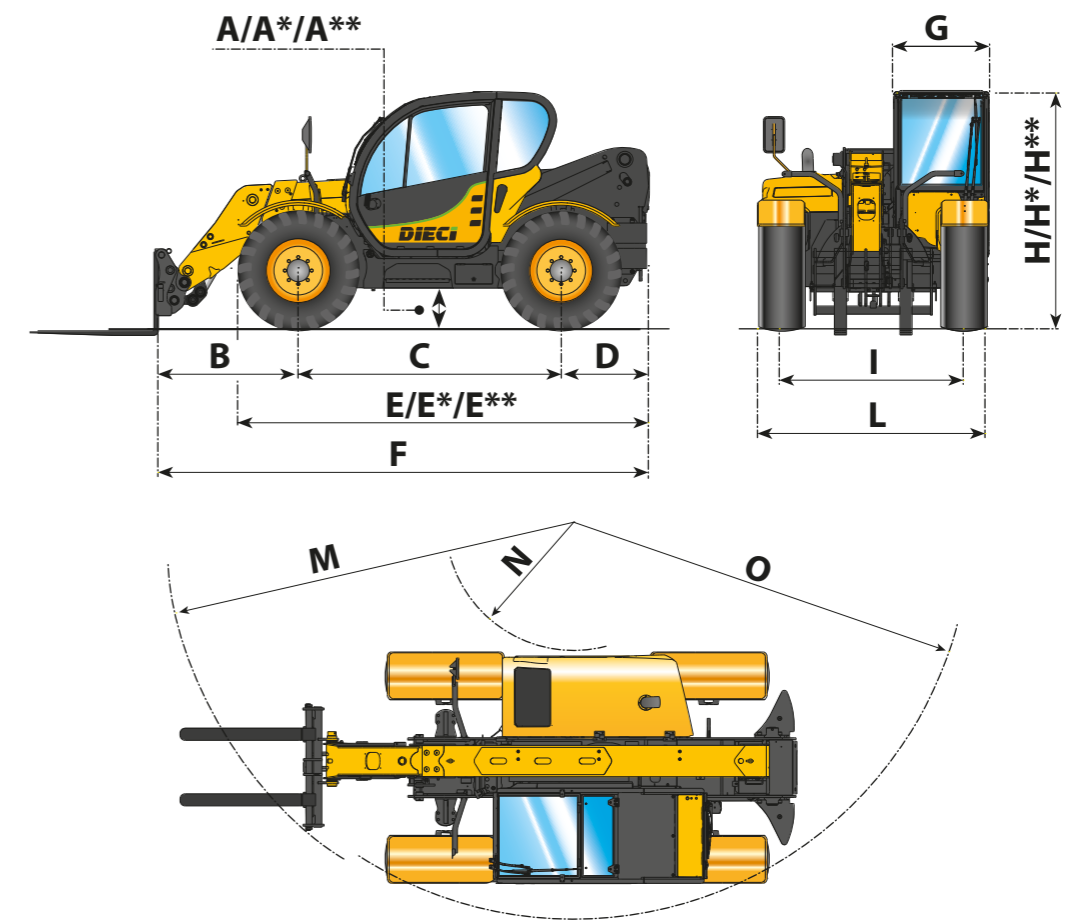
## TYRES

|          |            |
|----------|------------|
| Tyres    | 18-22.5"   |
| Tyres    | 18R22.5"   |
| * Tyres  | 400/70R24" |
| ** Tyres | 460/70R24" |

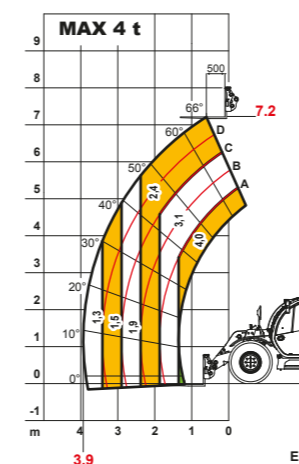
| DIMENSIONS      | 40.7              | 38.8              | 38.10             |
|-----------------|-------------------|-------------------|-------------------|
| <b>A/A*/A**</b> | 390/410*/450**    | 390/410*/450**    | 390/410*/450**    |
| <b>B</b>        | 1260              | 1460              | 1290              |
| <b>C</b>        | 2750              | 2750              | 2750              |
| <b>D</b>        | 970               | 970               | 970               |
| <b>E/E*/E**</b> | 4275/4295*/4310** | 4275/4295*/4310** | 4275/4295*/4310** |
| <b>F</b>        | 4980              | 5180              | 5010              |
| <b>G</b>        | 940               | 940               | 940               |
| <b>H/H*/H**</b> | 2360/2380*/2400** | 2360/2380*/2400** | 2360/2380*/2400** |
| <b>I</b>        | 1780              | 1780              | 1780              |
| <b>L</b>        | 2290              | 2290              | 2290              |
| <b>M</b>        | 3700              | 4050              | 3730              |
| <b>N</b>        | 930               | 930               | 930               |
| <b>O</b>        | 3500              | 3500              | 3500              |

Measurements expressed in millimetres

(\*) - (\*\*) = Measurements referring to optional wheels

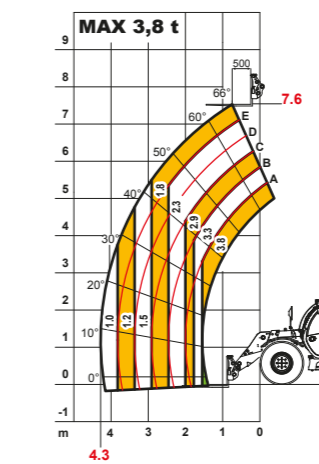


(\*) - (\*\*) = Measurements referring to optional wheels



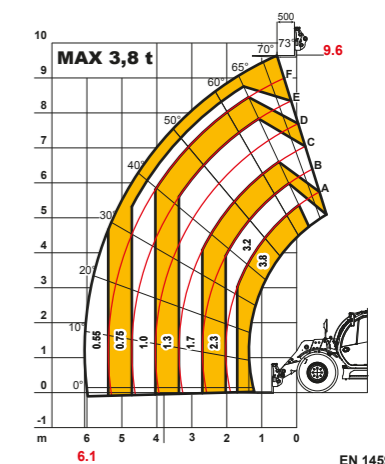
Zeus 40.7 EVO2

EN 1459



Zeus 38.8 EVO2

EN 1459



Zeus 38.10 EVO2

EN 1459