



DIECI



PEGASUS 400°



Dieci S.r.l.
Via E. Majorana, 2-4
42027 - Montecchio Emilia (RE) ITALY
Tel. +39 0522 869611
Fax +39 0522 869798
E-mail: info@dieci.com



38.16
400°



40.18
400°

PERFORMANCE	38.16 400°	40.18 400°
Maximum capacity (kg)	3.800	4.000
Maximum lifting height (m)	15,70	18,00
Maximum horizontal outreach (m)	13,35	15,30
Outreach at maximum height (m)	3,70	2,95
Fork swivelling angle	134°	134°
Pull-out force (daN)	5.700	5.700
Towing force (daN)	7.300	7.300
Maximum climb angle	40%	40%
Total weight empty (kg)	13.200	13.700
Max speed (km/h)	30*	30*

* referred to wheels having the maximum allowable diameter

BOOM	38.16 400°	40.18 400°
Times: empty (in seconds)	Patented compensation system	
Lifting	17,4	20,6
Descent	12,6	14,2
Extension	34,2	26,0
Retraction	21,9	17,0
Forward swivelling	3,9	3,8
Reverse swivelling	2,4	2,0

ENGINE

Model:	Kubota
Maximum power kW (hp):	74.5 (101)
Revolutions per minute (rpm):	2600
Operation:	4-stroke diesel
Injection:	Electronic direct, Common Rail
Number and arrangement of cylinders:	4, vertical in line
Displacement (cm ³):	3769
Specific consumption at 2600 rpm (g/kWh):	231
After-treatment exhaust gas system	DPF (Stage 3B / Tier 4i)
	Turbo compressor
* at maximum power	Liquid cooling system

HYDRAULIC PLANT

Double gear pump with "Energy Saving" system	
Gear pump with capacity at max speed (lt/1')	135
Max working pressure (bar)	230
Control valve with joystick	5 in 1 proportional
Simultaneous movements	5
Proportional control distributor "Load Sensing" with "Flow Sharing"	

DIFFERENTIAL AXLES

Steering axles: 2, with planetary reduction gears	
Steering types: 4 wheels / transversal / 2 wheels	
Front axle: rigid	
Back axle: oscillating	
Oil bath service braking on the 4 wheels with double hydraulic plant and servo brake	
Negative action parking brake	

REFUELLING (Litres)

Hydraulic plant (total)	270
Fuel tank	180

OPTIONALS AND ACCESSORIES

A/C; water heater; pneumatic seat suspension; light on boom head; quick attachment for accessories; radio; anti-theft alarm; glass protection; LED work lights; Transverse levelling device on wheels and others...

(For further customised accessories, please consult your local dealer)

TRANSMISSION

Hydrostatic transmission with variable displacement pump.
Hydrostatic engine with automatic variation.
Electrical - hydraulic inversion.
Inching pedal for controlled advancement.
Servocontrolled 2-speed gearbox.

SAFETY DEVICES

Movement block in case of overload, starting only with gear in neutral, running only with driver on board, automatic parking brake with engine stopped. Automatic transversal levelling with outriggers.
Stabilizers block and levelling device with boom up.

DEVICES AS PER STANDARD

ROPS - FOPS approval, suspension on silentblock, soundproof, ventilation and heating, openable rear glass and hood, double-glaze door with opening in the upper part, adjustable seat with seatbelt. Enables fitting a radio and adjustable steering wheel.
3" TFT Monitor with load indicator and function diagnostics and rev counter, temperature, water and fuel level analogue indicators.
Maximum turret rotation speed adjustment. Digital speedometer.

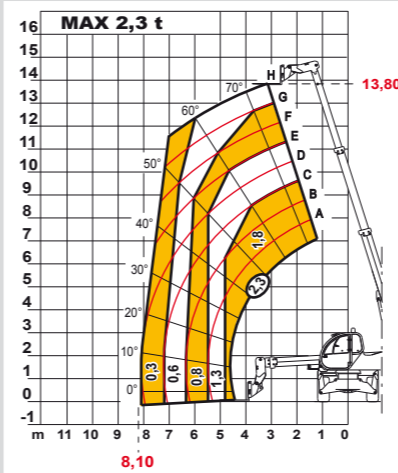
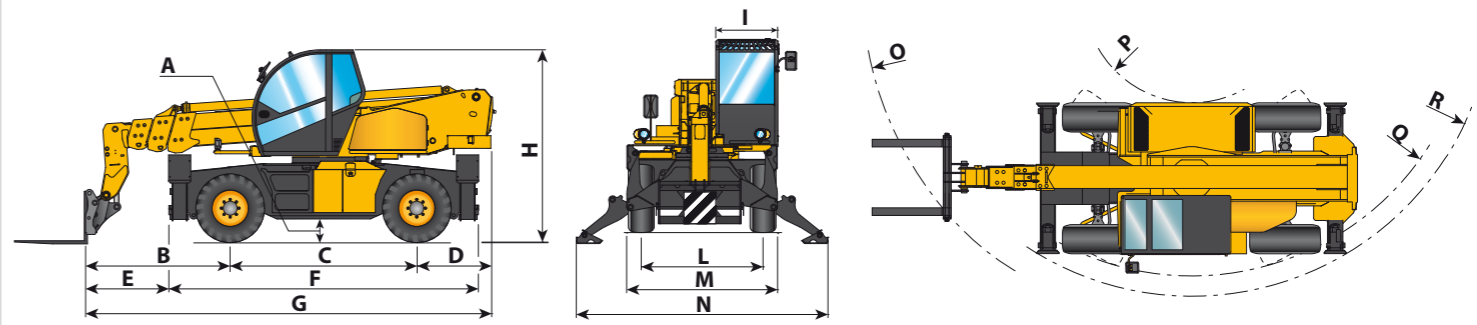
TYRES

Tyres	405/70R20"
Alternative	405/70-20"

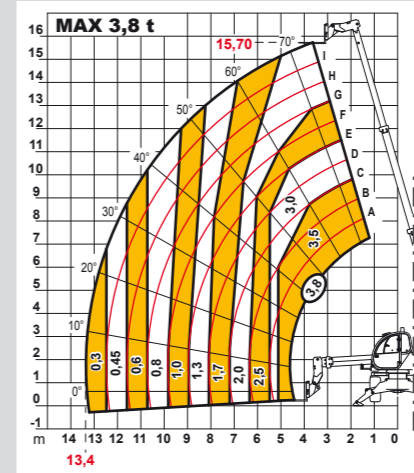
DIMENSIONS

	38.16 400°	40.18 400°
A	310	310
B	2430	2280
C	2950	2950
D	1175	1175
E	1490	1330
F	4880	4880
G	6555	6405
H	3040	3040
I	980	980
L	1920	1920
M	2380	2380
N	3970	3970
O	5265	5160
P	1700	1700
Q	4430	4430
R	4750	4750

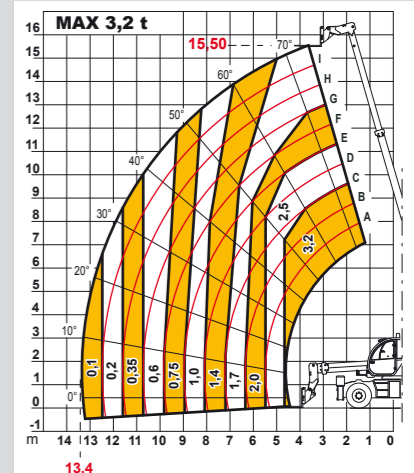
Measurements expressed in millimetres



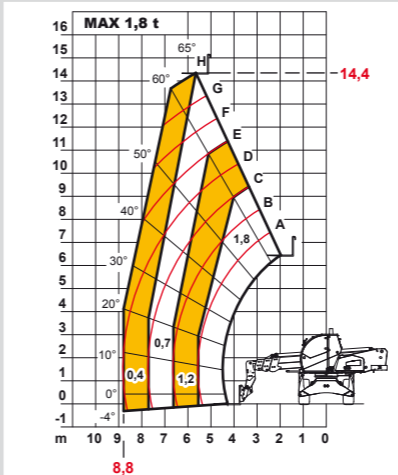
Pegasus 38.16 400°



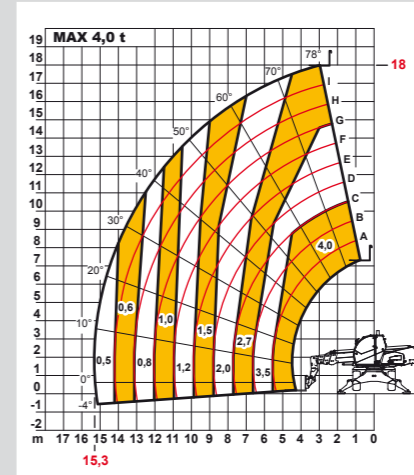
Pegasus 38.16 400°



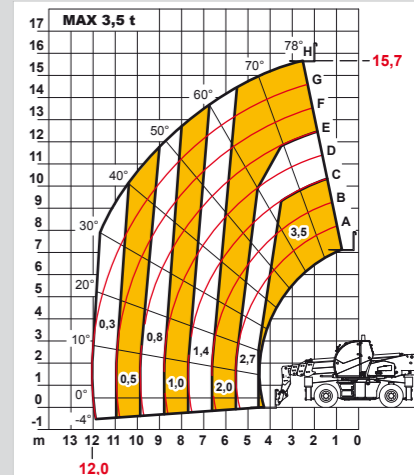
Pegasus 38.16 400°



Pegasus 40.18 400°



Pegasus 40.18 400°



Pegasus 40.18 400°