



DIECI



Dieci S.r.l.
Via E. Majorana, 2-4
42027 - Montecchio Emilia (RE) ITALY
Tel. +39 0522 869611
Fax +39 0522 869798
E-mail: info@dieci.com

DEDALLUS ^{VS}



28.7 ^{VS} 28.9 ^{VS} 30.7 ^{VS} 30.9 ^{VS}

PERFORMANCE	28.7	30.7	28.9	30.9
Maximum capacity (kg)	2.800	3.000	2.800	3.000
Maximum lifting height (m)	6,35	6,35	8,70	8,70
Maximum horizontal outreach (m)	3,65	3,65	5,70	5,70
Outreach at maximum height (m)	0,80	0,80	0,80	0,80
Fork swivelling angle	146°	146°	146°	146°
Pull-out force (daN)	5.700	5.700	5.700	5.700
Towing force (daN)	5.500	5.500	5.500	5.500
Maximum climb angle	40%	40%	40%	40%
Total weight when empty (kg)	6.100	6.100	6.250	6.250
Max speed (km/h) *	35	35	35	35

* = referred to wheels having the maximum allowable diameter

BOOM	28.7	30.7	28.9	30.9
Times (in seconds)				
Lifting	7,4	7,4	9,0	9,0
Descending	3,9	3,9	4,7	4,7
Extension	5,7	5,7	5,2	5,2
Retraction	3,2	3,2	2,9	2,9
Forward swivel	3,2	3,2	3,2	3,2
Backward swivel	2,1	2,1	1,7	1,7

Patented compensation system

ENGINE	
Model:	Kubota
Maximum power kW (hp):	74.5 (101)
Revolutions per minute (rpm):	2600
Operation:	4-stroke diesel
Injection:	Electronic direct, Common Rail
Number and arrangement of cylinders:	4, vertical in line
Displacement (cm³):	3769
Specific consumption at 2600 rpm (g/kWh):	231
After-treatment exhaust gas system	DPF (Stage 3B / Tier 4i)
	Turbo compressor
* at maximum power	Liquid cooling system

HYDRAULIC SYSTEM	
Gear pump with max speed capacity (lt/1'):	115
Max operating pressure (bar):	230
Distributor control with joystick:	4 in 1 electro-proportional

DIFFERENTIAL AXLES	
Steering axles: 2, with planetary reduction gears	
Steering types: 4-wheel / transversal / 2-wheel	
Front axle: rigid	
Rear axle: oscillating	
Oil bath service braking on the front axle with servo-brake	
Negative action parking brake.	
For machines with "Tractor" approval:	
Service brake in oil bath on the 4 wheel with a double hydraulic system and servo-brake	

REFUELLING (Litres)	
Hydraulic system (total)	110
Diesel tank	100

OPTIONALS AND ACCESSORIES	
A/C; Water heaters; Pneumatic suspension seat; Headlight on boom head; Quick coupling for accessories; Radio; Anti-theft system; Window protection. LED work lights.	
(For additional customizations, contact the local dealer)	

TRANSMISSION	
Hydrostatic transmission with electronically-controlled variable displacement pump	
Vario System continuously variable hydrostatic motor	
Electronic inching pedal	
Power-Efficiency Control System	
Electronic control of the machine functions to optimise fuel consumption without compromising performance	

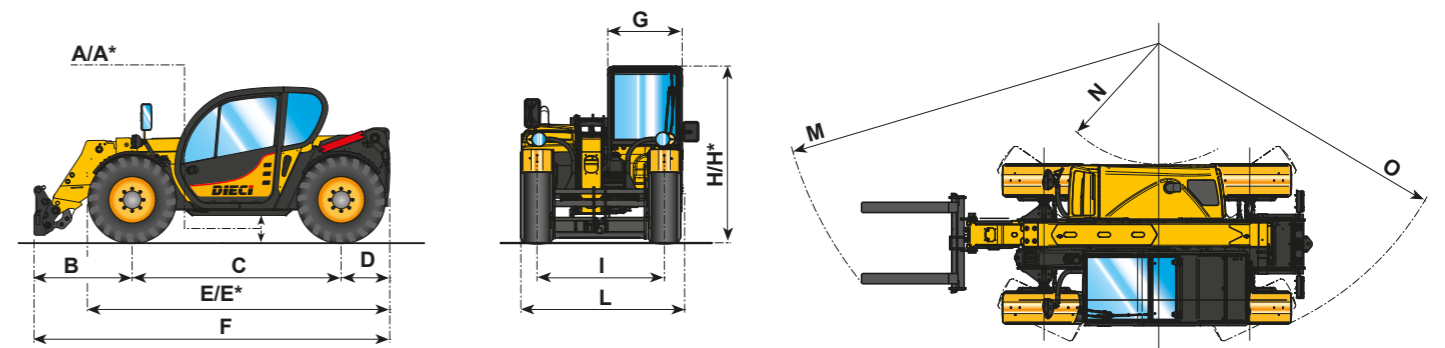
STANDARD DEVICES	
Anti-tipping device with peorative movement block.	
Hydraulic socket for any accessories on the boom head.	
Soundproof closed cab, ROPS-FOPS approved, with heating.	
Self-blocking differential front axle (limited slip 45%).	
Self-cleaning filter with cyclone filters.	
Electric window winder.	
LCD display. Digital speedometer.	

TYRES	28.7	30.7
	28.9	30.9
Tyres	405/70x20"	405/70x20"
(*) Alternative	405/70x24"	405/70x24"

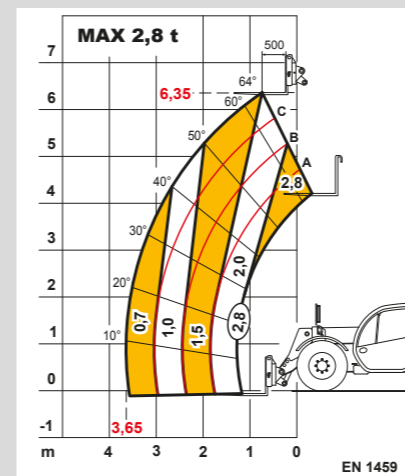
DIMENSIONS	28.7	30.7	28.9	30.9
A/A*	400/440*	400/440*	400/440*	400/440*
B	1315	1315	1232	1232
C	2800	2800	2800	2800
D	650	650	743	743
E/E*	3990/4040*	3990/4040*	4087/4137*	4087/4137*
F	4765	4765	4775	4775
G	940	940	940	940
H/H*	2040/2080*	2220/2260*	2040/2080*	2220/2260*
I	1600	1600	1600	1600
L	2000	2000	2000	2000
M	4900	4900	4900	4900
N	1670	1670	1670	1670
O	4000	4000	4000	4000

Measurements expressed in millimetres

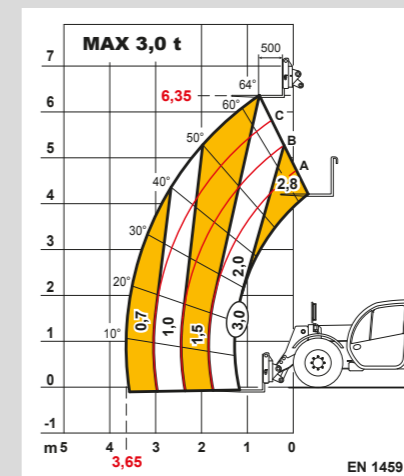
(*) = Measurements referring to optional wheels



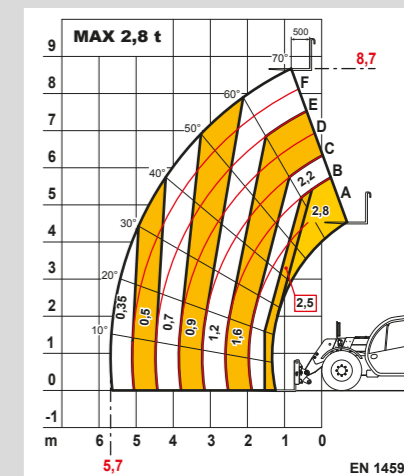
(*) = Measurements referring to optional wheels



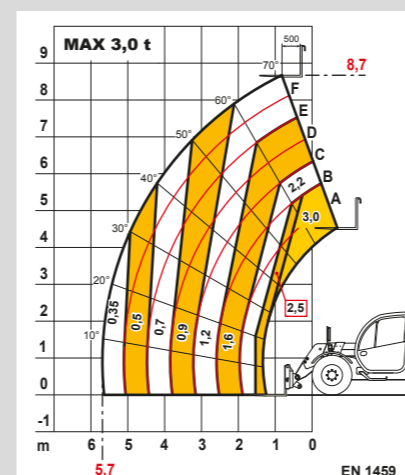
Dedalus 28.7 VS



Dedalus 30.7 VS



Dedalus 28.9 VS



Dedalus 30.9 VS