

**DIECI**



**AGRI PLUS EVO2**





# EVO 2

**Everything is so much easier**

Extremely easy to handle, surgical precision movements, maximum power in the wheels and boom, absolute comfort, and ecological.

These are just a few reasons that make **Agri Plus** the most innovative machine in its sector.

The new entirely electronically-controlled, ecological and higher performance motors, combined with the new VS EVO 2 transmission, transmit all the required power and drastically **reduce** consumption by **20%**.

## A DREAM COME TRUE





EVOLUTION

COMFORT

EVO 2

GREEN CORE

HI-TECHNOLOGY





# WIDE RANGE

## 6 MODELS

9 - 7 m  
BOOM HEIGHT

3800 - 4000 Kg  
MAXIMUM CAPACITY

PS - VS  
2 TRASMISSIONS

120 - 141 - 152 hp  
3 POSSIBLE ENGINE SIZES







## Two transmissions

### VARIO SYSTEM EVO 2

4 work modes.

It enables you to always find the best speed / power ratio under any operating condition, thus enabling unbeatable fluidity of movement and pinpoint accuracy in small movements.

### POWER SHIFT

New generation

Manual/automatic gearbox with 6 gears forward, 3 in reverse and an inching pedal, which ensure maximum power at all operation speeds.

## Reliability and productivity!

Dieci machines are inspired by this philosophy!

6 models, a wide range of dedicated equipment, type-approval for towing, high-quality PTO and components guarantee performance even after years of work.

## Not only power

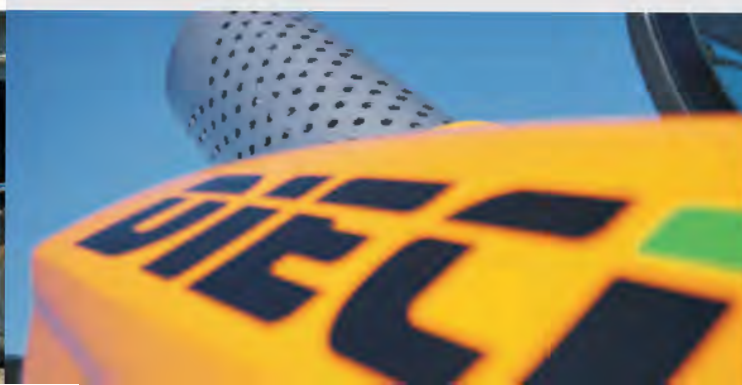
Agri Plus responds to controls in a fluid way, with precision and promptness, thus guaranteeing exceptional work comfort in complete safety.

## New AdBlue engines

Stage 3B/Tier 4i latest generation engine with full **electronic control** and **reduced fuel consumption of over 20%**.

**Maximum power of 141 and 152 hp**, for VS models, engines from 4.5 l to 1900 rpm that are able to amply transfer all horse power available to the new transmission, thus guaranteeing **maximum performance**.

**120 hp** available for **Power Shift** models with extremely progressive engines from 4.5 l to 1900 rpm.





# EVOLUTION

40 Km/h  
RAPID MOVEMENTS

STACKING

SILAGING

TRAILERS TOW

DCS  
DESCENT CONTROL SYSTEM







## Speed

40 km/h (limited according to standards) with **high traction force**. **Powerful acceleration** and smooth driving in complete safety.

## Unparalleled manoeuvrability

The use of **VS hydrostatic transmission**, combined with the right work mode, will enable easy, precise manoeuvres. **Stacking** performance will be much better.

The combined use of the electronic accelerator and inching pedal make it possible to **move the vehicle forward slowly** and in a controlled way, also with the boom at maximum height.

## Maximum performance

The perfect balance between the two systems of speed control and temperature, which are extremely reliable, guarantee exceptional **towing performance** and work with the shovel.

**Considerable traction at reduced speed** is obtained with **silaging** operations on steep slopes.

The innovative system of electronic engine management/transmission enables **progressive speed control** in **any work condition**.

## ENGINES Stage 3B/Tier 4i SCR with AdBlue:

The captivating lines conceal the new Turbo Diesel Aftercooler Common Rail engines, with full electronic control. Exhaust gas management complies with the strictest anti-pollution standards, with a **significant reduction in consumption and maintenance interventions**.

### NEW DEVICE

#### **DCS Descent Control System**

The new servo-assisted check valves enable descent of the boom with low RPM and instant response to controls. Further **fuel consumption reductions up to 10%**.







**COMFORT**

**ROPS-FOPS**

**VISIBILITY**

**360°**

**COMPUTER  
ON BORD**

**A/C**

**AGRI PLUS**







### Absolute comfort

It is the first thing that is noticed on an Agri Plus. The meticulous study of the layout of the controls makes it easy, intuitive and comfortable to use the machine.

Unparalleled technology with the new **computer on board**.

The display clearly views all the current information required to use the vehicle.

The **semi-automatic air conditioner**, which has 7 vents, enables perfect distribution of air inside the cab. The roof and window, which can be opened and are standard on all models, allow better ventilation whilst driving.



Equipped with the **largest door** on the market, it is easier and safer to access the driver's seat.

The inside of the cab has been entirely designed in order to make work easier for the operator.

Soundproofing, **adjustable steering wheel** height and depth, **electric windows**, storage compartments and various accessories such as **air conditioning**, stereo, awnings, and a pneumatic ergonomic seat enable operation in total comfort.

The windscreen wiper also cleans the upper part of the windscreen in the cab. A large mesh protection grill and driving seat amongst the highest in the category enable unparalleled view at **360°** with regard to **ROPS/FOPS** safety requirements.





# HANDLING

AGILITY



NEW  
JOYSTICK

INCHING PEDAL







### **All in one hand with absolute precision.**

The new 4 in 1 joystick, which is standard on all models, enables integral control of the vehicle. The integrated reverse gear control enables quicker change of direction.

The flow sharing distributor enables all simultaneous movements.

### **Easy Dumping**

The ingenious **oscillation system** is purposely designed to increase the operation angle, which is particularly significant to unload the shovel with the boom raised.



### **Agility**

The high-efficiency steering system transmits a **light driving** sensation, in fact even in the most loaded conditions the steering wheel is always soft.

**Manoeuvrability and compactness** remain the main features, and the **turning radius** is the narrowest in its category.

### **Inching pedal**

Essential control when the advancing speed must be reduced or stopped and maximum hydraulic power is requested for the equipment in use.

The **servo-assisted service brake** also guarantees safe, proportional braking with less force on the pedal.

### **Easy Ride**

The steadfast work of Dieci technicians has designed the sophisticated pneumatic suspension system on the boom (optional), obtaining a drastic reduction of oscillations detected when driving on irregular and uneven grounds.





# GREEN CORE

- **20%**  
CONSUMPTION  
REDUCTION

**TIF USER**  
DISPLAY INTERFACE

**STAGE 3B / Tier 4i**  
NEW ENGINES

**SCR**  
(SELECTIVE CATALYST REDUCTION)







## Computer on board

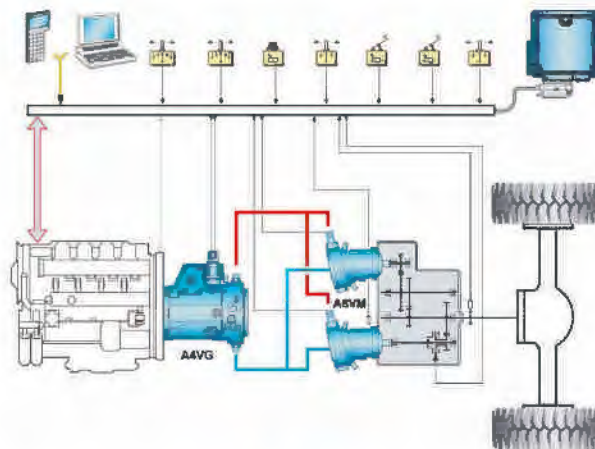
Hi-tech instrument with large **coloured-display** and icon intuitive interface to supply more complete, detailed information.

All machine functions are managed by the **CANBUS** system that enables better response in shorter time.

Work conditions are always under control and diagnostics are more thorough with actual readings.

Exceptional performance for new entirely electronically controlled FTP engines with power up to 152 hp, which comply with the anti-pollution standards STAGE 3B/Tier 4i.

The integrated electronic management of the engine and transmission guarantee **fuel savings of 20% and relative reduction of CO<sub>2</sub> emissions, with an almost total abatement of NO<sub>x</sub>.**

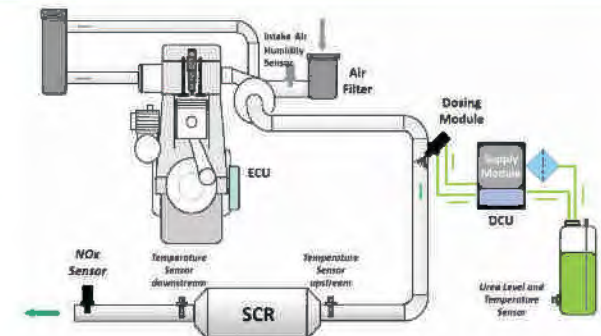
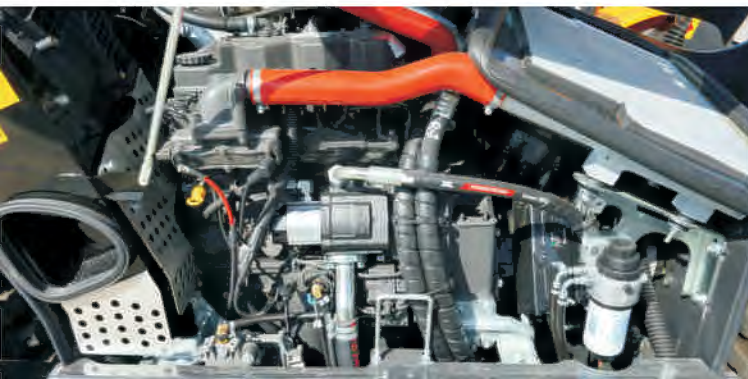


## Dieci for the environment

*A cleaner and more sustainable leap into the future.*

Dieci's choice was to adapt completely electronic management by injection, turbo pressure, torque, rpm, engine brake, starter safety release, monitoring, diagnostics, and **SCR system (AdBlue)** for exhaust gas treatment.

**Better performance, consumption reductions, less contamination of engine oil, longer maintenance intervals and SCR duration equivalent to the engine's lifespan.**





**VS EVO 2**

**NORMAL**

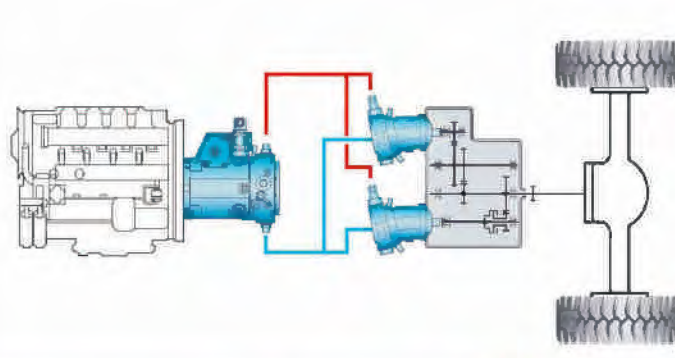
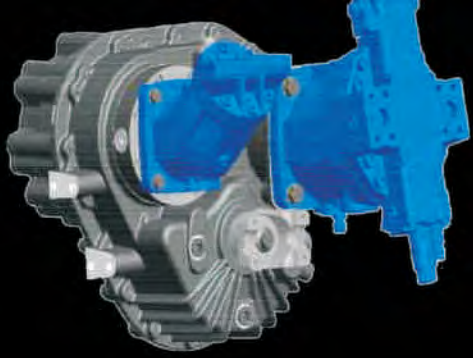
**ECO**

**LOADER**

**CREEPER**







## VS EVO 2 Dual Motor

An ingenious way to utilise the total horse power available from the large propulsion system.

The hydrostatic pump, together with the two hydraulic piston engines, is the core of transmission.

The electronic system, which controls distribution of power, disconnects an engine upon reaching high speed, thus keeping the power supplied to the wheels unchanged, and **considerably reducing fuel consumption up to 20%.**



## 4 Work modes

The best performance in any work condition.

**NORMAL:** suitable for driving on the road with top speed of 40 km/h and great towing capacity.

**ECO:** perfect to obtain a considerable consumption reduction.

**LOADER:** ideal for load and push situations, enables better execution of controls to supply much safer power to the equipment, thus reducing the top speed.

**CREEPER:** a perfect combination between supplied power and manoeuvring speed, avoiding the classical problems of sinking (silage).





# TECHNOLOGY

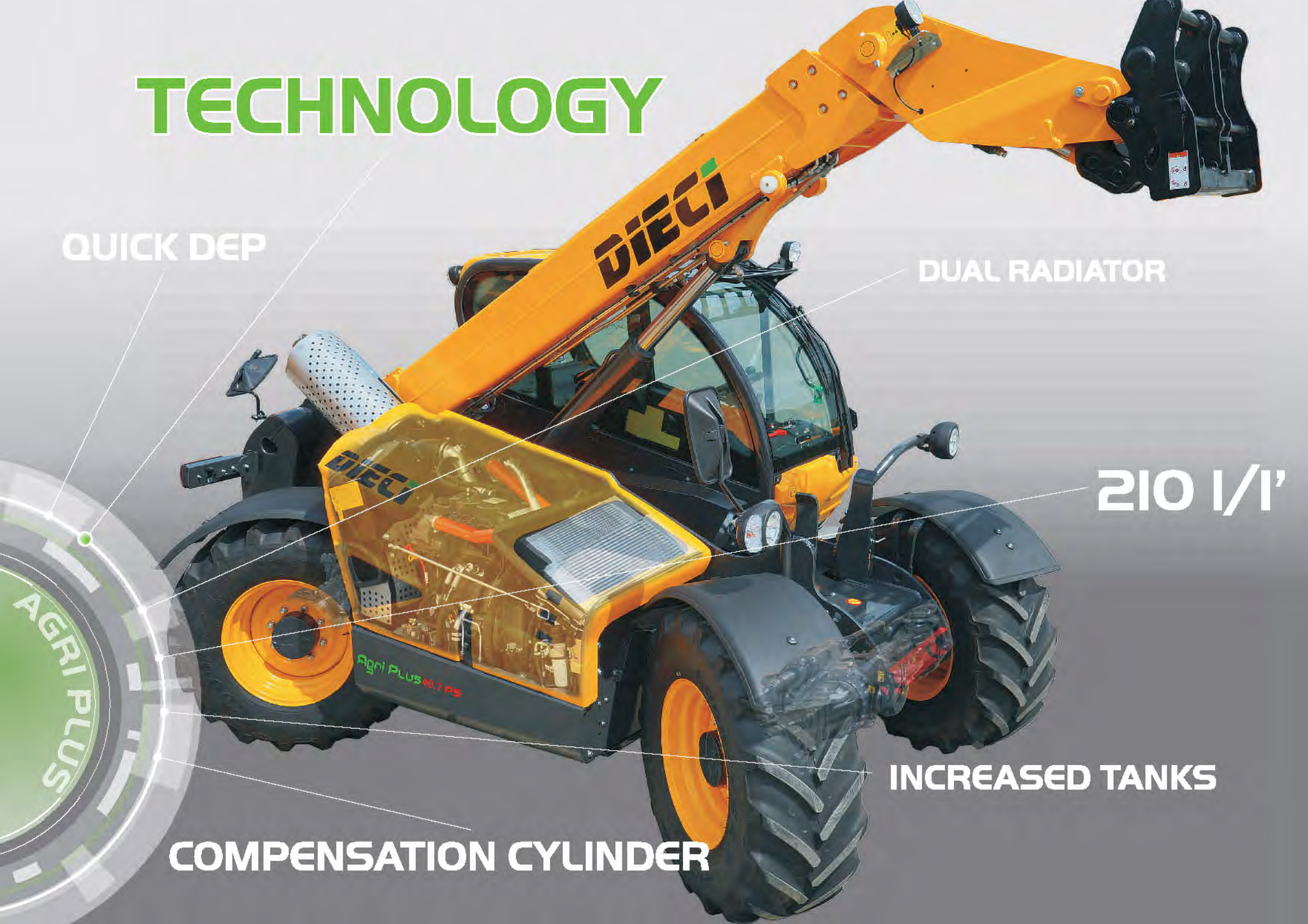
QUICK DEP

DUAL RADIATOR

210 1/1'

INCREASED TANKS

COMPENSATION CYLINDER







### Hydraulic system

The increased hydraulic pump having 201 l/1' for more speed to execute manoeuvres; **20% operation time reduction.**

The **compensation cylinder (PATENTED BY DIECI)** placed inside the lifting cylinder always makes the pressure on the boom balanced, increasing its durability over time.

### Quick Dep

Equipment hydraulic socket depressurization system: enables effortless connection of equipment.

### Design

It has always been the prerogative of Dieci engines and everything is done for a reason.

This is the case with the new bonnet, which, besides its aesthetic design, considerably improves soundproofing and ventilation of the engine compartment.

### Maintenance

All technological improvements have created space for **larger tanks** for Diesel, Oil and AdBlue.

Longer work cycles with less interruptions and **more productivity.**

### Dual radiator with dual Fan Drive

Two distinct radiators respectively dedicated to water and oil cooling and numerous thermal sensors protect the propulsion system against any problems of overheating.

### Reversible fans

Each radiator can be equipped with hydraulic reversible fans that enable remarkable fuel savings and make it foster and easier to execute cleaning operations required in dirty or dusty environments.





**SAFETY**

**ROPS-FOPS**

**TRANSVERSE  
LEVELLING**

**CHASSIS**

**LOAD  
LIMITING  
DEVICE**







+10°



### Load limiting device

All Dieci machines are supplied with a control device that analyses the data of the actual stability of the vehicle and, should the pre-set limits be reached, it immediately stops all compromising movements.

The **transversal levelling device** (optional), for slopes of up to  $\pm 10^\circ$ , enables operation with complete peace of mind on uneven ground.

The **Joystick** with the **capacitive dead man sensor** and seat sensor prevent accidental manoeuvres.



-10°



Cab with **ROPS-FOPS type-approval** designed with a safety cell to prevent deformation in the event of tipping over or dropping heavy loads.

### FRAME strength

The frame features a strong visual impact that distinguishes Dieci Agri Plus, the **oversized** structure confers characteristics of rigidity and total safety, even under major stress conditions.

The machine is **completely free of vibrations and deflections**.





# MADE IN ITALY







# FOR THE WORLD

DIECI, with more than half a century of experience and continuous development, achieves the **perfect vehicle** for every need.

The **Technical Assistance Service** is **present** across the world through an **extensive** network of authorized service centers and Dealers.

The automated spare parts warehouses and the direct assistance with the user, provide a very short time of intervention.

DIECI, within a few hours, can provide worldwide both spare parts and qualified staff.

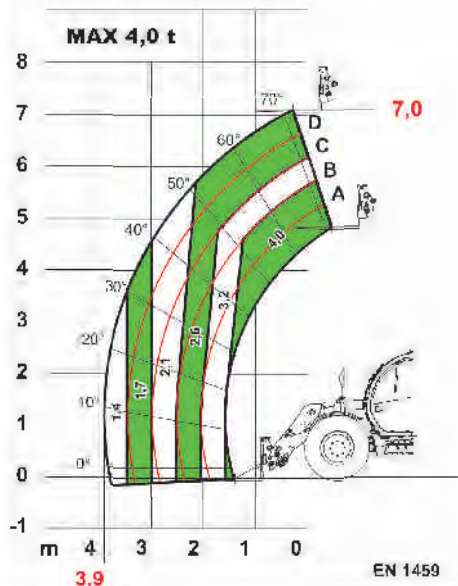
### **Warranty**

DIECI offers customized warranty extension packs for components and durability.





Diagram valid for all 40.7 models:  
40.7 VS - 40.7 PS



Agri Plus 40.7

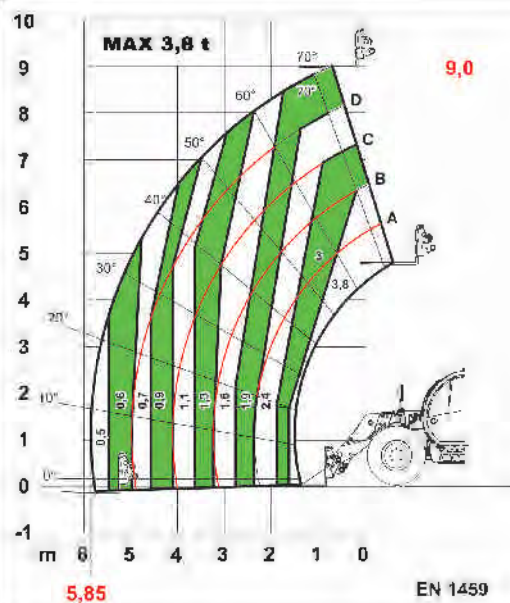
# TECHNICAL SPECIFICATIONS

## PERFORMANCES

	40.7 VS	40.7 PS	38.9 VS	38.9 PS
Maximum capacity (kg)	4.000	4.000	3.800	3.800
Maximum lifting height (m)	7,00	7,00	9,00	9,00
Maximum horizontal outreach (m)	3,90	3,90	5,85	5,85
Outreach at maximum height (m)	0,15	0,15	0,65	0,65
Fork arching angle	146°	146°	146°	146°
Lift force (daN)	6.000	6.000	6.000	6.000
Towing force (daN)	8.200	8.200	8.200	8.200
Maximum slope angle	60%	60%	60%	60%
Total weight when empty (Kg)	7.700	7.700	7.900	7.900
Max speed (km/h)	40	40	40	40

referring to wheels with the maximum admissible diameter

Diagram valid for all 38.9 models:  
38.9 VS - 38.9 PS



Agri Plus 38.9

## BRAS

	40.7 VS	40.7 PS	38.9 VS	38.9 PS
Time: when empty (in seconds)				
Lifting	6,6	7,5	6,6	7,5
Descent	3,9	4,4	3,9	4,4
Extension	5,5	6,2	5,5	6,2
Retraction	3,3	3,8	3,3	3,8
Arching forward	2,1	2,4	2,1	2,4
Arching Backward	1,2	1,4	1,3	1,5

Patented compensation system / Standard speed supplement

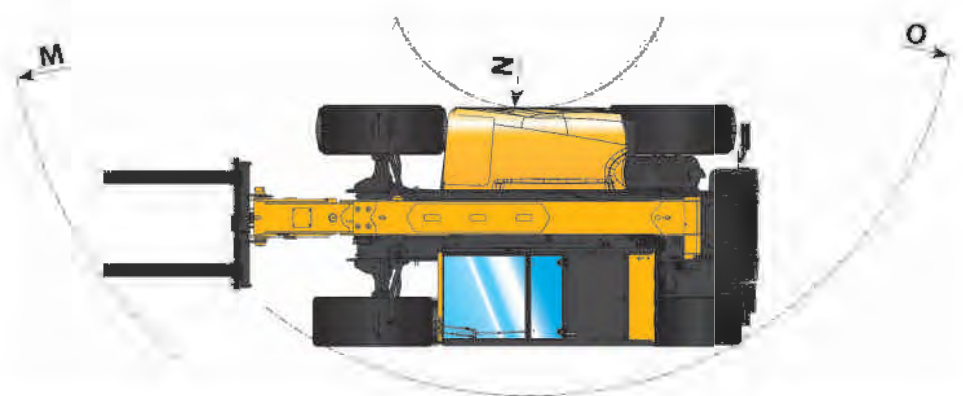
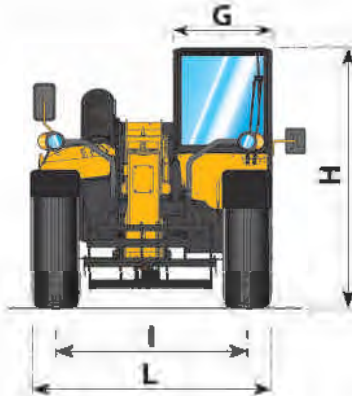
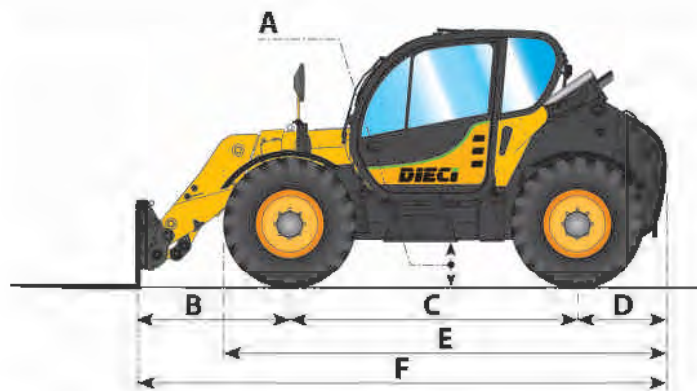
## ENGINE

	VS Alternative 1	VS Alternative 2	PS
Model	FPT	FPT	FPT
Rated power kW (hp) @ 2200 rpm	96 (130)	103 (140)	81 (110)
Peak power kW (hp) @ 1900 rpm	105 (141)	113 (152)	89 (120)
Revolutions per minute (rpm)	2200	2200	2200
Operation	4-stroke diesel	4-stroke diesel	4-stroke diesel
Injection	Direct Electronic, Common Rail	Direct Electronic, Common Rail	Direct Electronic, Common Rail
Number of cylinders and layout	4, vertical in line	4, vertical in line	4, vertical in line
Engine size (cm <sup>3</sup> )	4500	4500	4500
Specific consumption - (g/kWh) @ 1900 rpm*	215	215	215
Anti-pollution regulation	Stage 3B / Tier 4i	Stage 3B / Tier 4i	Stage 3B / Tier 4i

\* at maximum power

Aftercooler turbo-compressor / Liquid cooling system





Measurements referred to the machine equipped with 405-70-24" wheels

### HYDRAULIC SYSTEM

Gear pump with max speed capacity of (l/min): **VS 210 / PS 180**  
 Max operational pressure (bar): **240**  
 Distributor control with joystick: **4in1 electro-proportional**  
 "Load Sensing" proportional distributor with "Flow Sharing".

### DIFFERENTIAL AXLES

Steering axles: 2, with epicycloidal reduction gears  
 Steering types: 4-wheel / transversal / 2-wheel  
 Front axle: fixed  
 Rear axle: oscillating  
 Oil bath service braking on 4 wheels and servo brake  
 Negative action parking brake.

### REFUELLING (litres)

Hydraulic system (total) **160**  
 Diesel tank **180**  
 AdBlue tank **35**

### TYRES

Tyres **405/70R24"**  
 Alternative **460/70R24"**  
 Alternative **17.5LR24"**  
 Alternative **18-22.5"**  
 Alternative **18R22.5"**

### TRANSMISSION (for VS models)

Hydrostatic transmission Varlo System EVO 2.  
 Electro-hydraulic reversing gear.  
 Drive Mode: Auto motive / Loader / Creeper / Eco.  
 Electronic inching pedal.

### TRANSMISSION (for PS models)

Torque with converter transmission.  
 Electro-hydraulic reversing gear.  
 6 forward gears / 3 reverse gears.

### DEVICES PROVIDED AS PER STANDARD

Anti-tipping device with hazardous movement block.  
 Hydraulic socket for any accessories on the boom head.  
 Approved ROPS-FOPS closed, soundproof cab with heating.  
 Self-locking front axle differential (limited slip 45%).  
 Electric steering control.  
 High efficiency filter with cyclones.  
 Electric window winder.  
 Colour LCD display. Grid Heater.

### TOWING CAPACITY (upon request)

Trailer without brakes (t): **6**  
 Inertia braking (t): **9**  
 Mechanical braking (t): **6**  
 Hydraulic/pneumatic braking (t): **20**

### DIMENSIONS

	40.7 VS	40.7 PS	38.9 VS	38.9 PS
A	360	360	360	360
B	1475	1475	1475	1475
C	2750	2750	2750	2750
D	850	850	850	850
E	4175	4175	4175	4175
F	5075	5075	5075	5075
G	940	940	940	940
H	2445	2445	2445	2445
I	1820	1820	1820	1820
L	2260	2260	2260	2260
M	4910	4910	5045	5045
N	1320	1320	1320	1320
O	3920	3920	3920	3920

Measurements referred to the machine equipped with 405-70-24" wheels / Measurements expressed in millimetres



