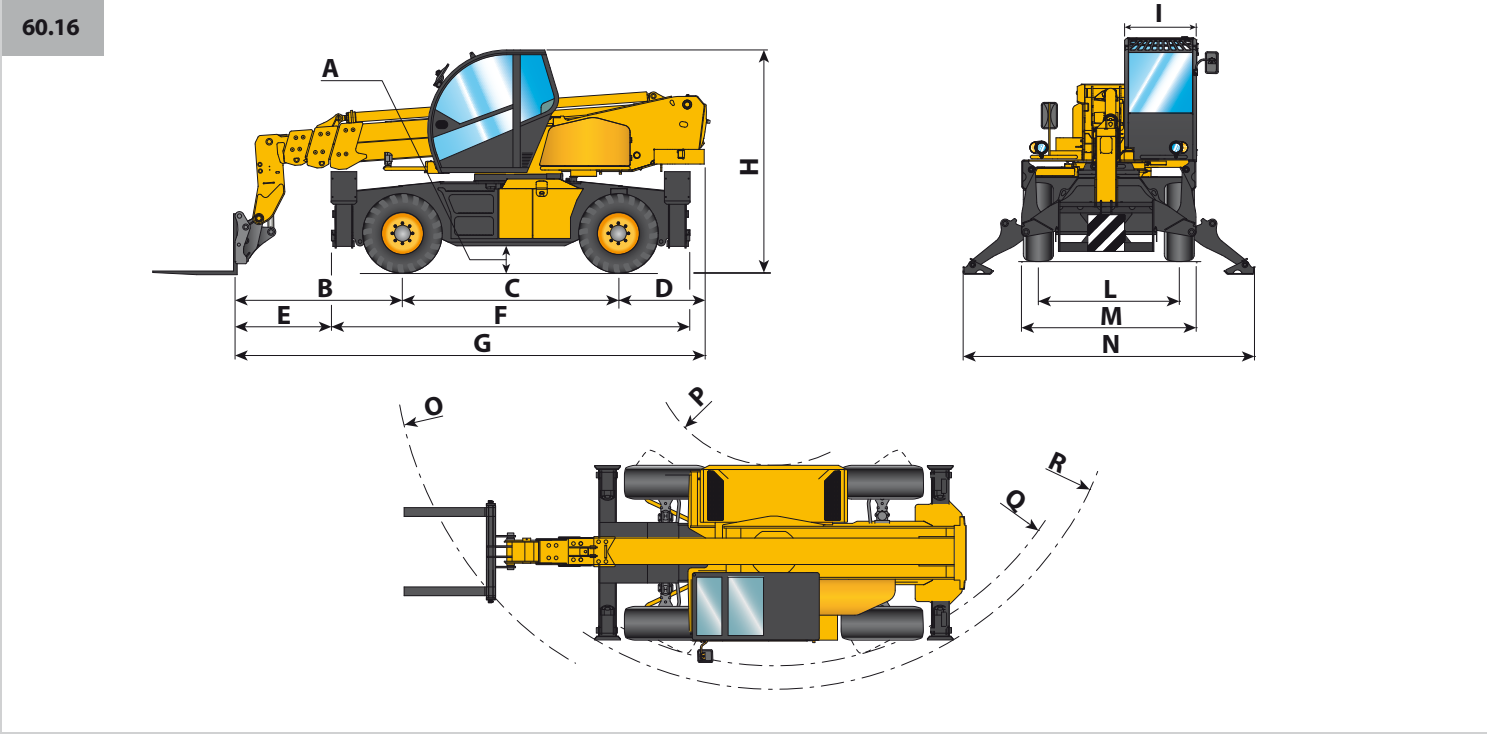
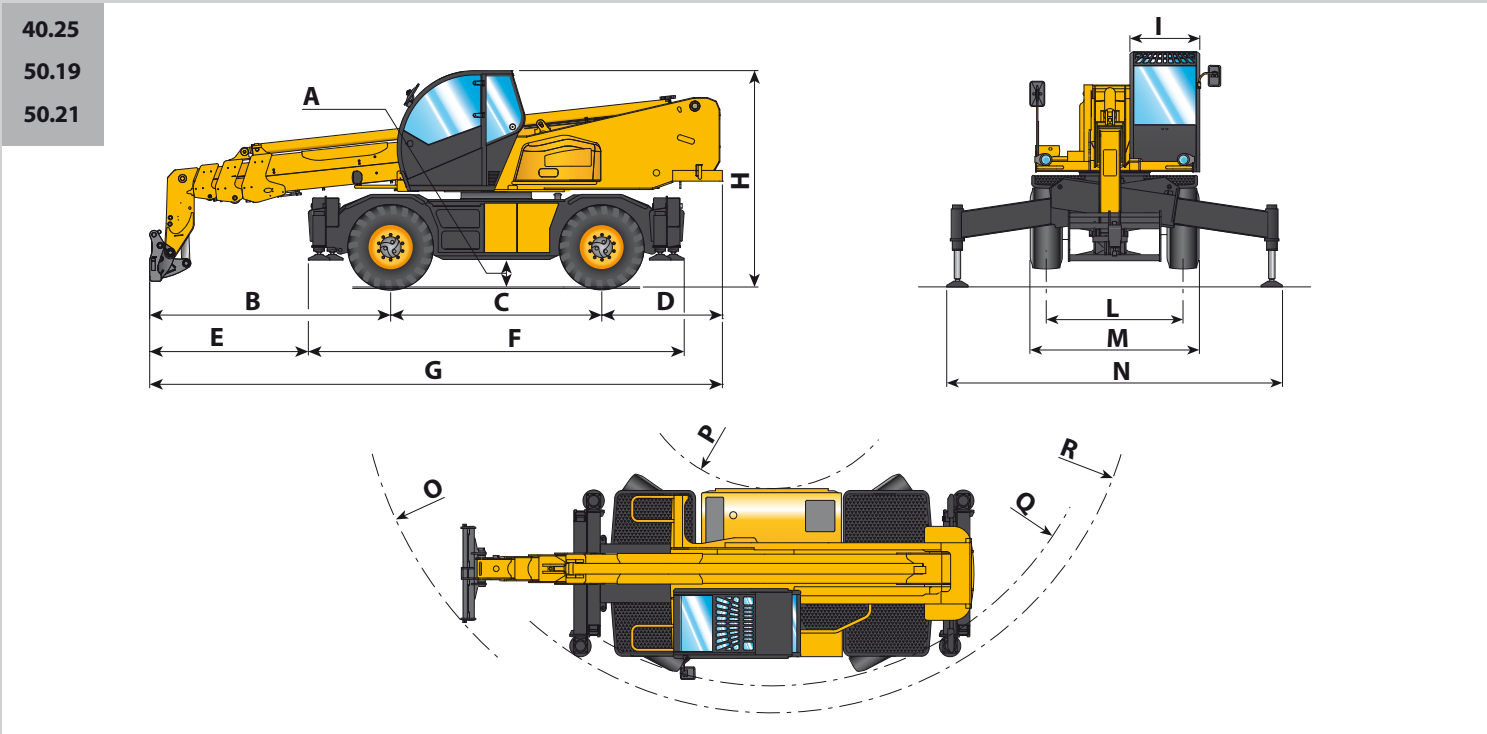


DIMENSIONS	40.25	50.19	50.21	60.16
A	360	360	360	360
B	3365	2660	2835	2580
C	2950	2950	2950	2950
D	1685	1150	1365	1190
E	2195	1510	1665	1580
F	5290	5290	5290	4940
G	8000	6760	7150	6720
H	3025	3025	3025	3020
I	980	980	980	980
L	1920	1920	1920	1920
M	2380	2380	2380	2380
N	5070	4800	5070	3820
O	6175	5450	5585	5380
P	1700	1700	1700	1700
Q	4430	4430	4430	4430
R	4790	4790	4790	4800

Measurements expressed in millimetres



DIECI



PEGASUS 360°



Dieci S.r.l.
Via E. Majorana, 2-4
42027 - Montecchio Emilia (RE) ITALY
Tel. +39 0522 869611
Fax +39 0522 869798
E-mail: info@dieci.com



40.25

50.19

50.21

60.16

PERFORMANCE	40.25	50.19	50.21	60.16
Maximum capacity (kg)	4.000	5.000	5.000	6.000
Maximum lifting height (m)	24,10	18,70	20,50	15,70
Maximum horizontal outreach (m)	20,50	16,40	18,00	13,00
Outreach at maximum height (m)	6,45	4,80	5,50	3,20
Fork swivelling angle	133°	133°	133°	134°
Pull-out force (daN)	5.700	5.700	5.700	5.700
Towing force (daN)	9.000	9.000	9.000	9.000
Maximum climb angle	40%	40%	40%	40%
Total weight empty (kg)	17.500	16.500	17.540	16.600
Max speed (km/h)	40*	40*	40*	40*

* referred to wheels having the maximum allowable diameter

BOOM	40.25	50.19	50.21	60.16
Times: empty (in seconds)	Patented compensation system			
Lifting	21,9	21,9	21,9	24,8
Descent	13,8	13,8	13,8	16,5
Extension	44,4	27,8	31,2	24,7
Retraction	23,1	16,9	17,4	11,6
Forward swivelling	3,7	3,7	3,7	5,7
Reverse swivelling	2,3	2,3	2,3	2,5

ENGINE

Model:	FPT
Rated power kW (hp) @ 2200 rpm	96 (130)
Peak power kW (hp) @ 1900 rpm	105 (141)
Revolutions per minute (rpm):	2200
Operation:	4-stroke diesel
Injection:	Electronic direct, Common Rail
Number and arrangement of cylinders:	4, vertical in line
Engine size (cm³):	4500
Specific consumption - (g/kWh) @ 1900 rpm	208
Anti-pollution regulation:	Stage 3B / Tier 4i
* at maximum power	Aftercooler turbo compressor
	Liquid cooling system

OPTIONALS AND ACCESSORIES

A/C; water heater; pneumatic seat suspension; light on boom head; quick attachment for accessories; radio; anti-theft alarm; glass protection; Led work lights, Transverse levelling device on wheels and others...
(For further customised accessories, please consult your local dealer)

TRANSMISSION

Hydrostatic transmission with variable displacement pump.
Hydrostatic engine with automatic variation.
Electrical - hydraulic inversion.
Inching pedal for controlled advancement.
Servocontrolled 2-speed gearbox.

SAFETY DEVICES

Movement block in case of overload, starting only with gear in neutral, running only with driver on board, automatic parking brake with engine stopped. Automatic transversal levelling with outriggers.
Stabilizers block and levelling device with boom up.

DEVICES AS PER STANDARD

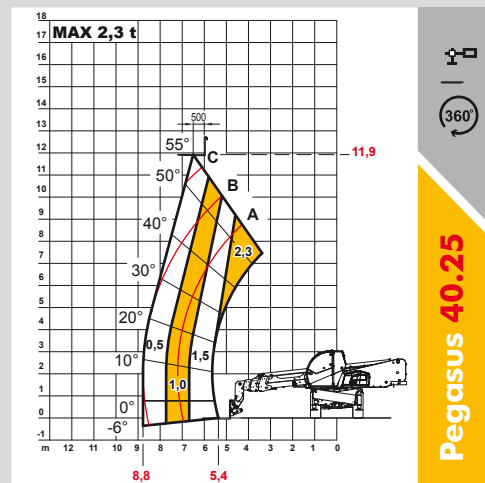
ROPS - FOPS approval, suspension on silentblock, soundproof, ventilation and heating, openable rear glass and hood, double-glaze door with opening in the upper part, adjustable seat with seatbelt. Enables fitting a radio and adjustable steering wheel.
3" TFT Monitor with load indicator and function diagnostics and rev counter, temperature, water and fuel level analogue indicators.
Maximum turret rotation speed adjustment. Digital speedometer.

REFUELLING (Litres)

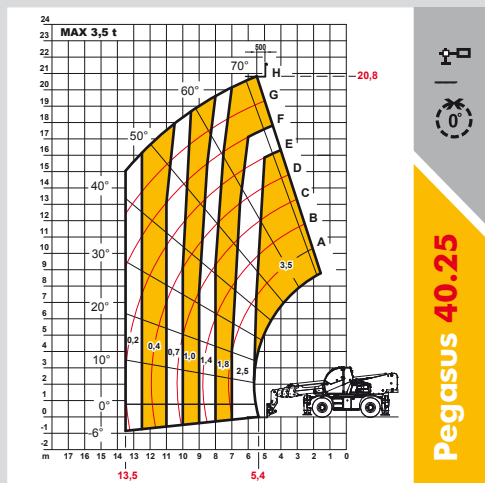
Hydraulic plant (total)	270
Fuel tank	180

TYRES

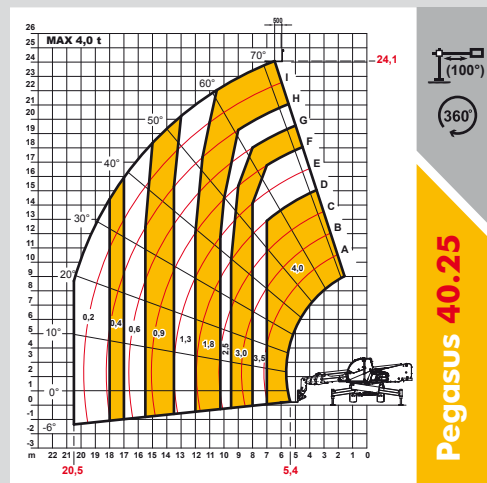
Tyres	18R22.5"
Alternative	18-22.5"



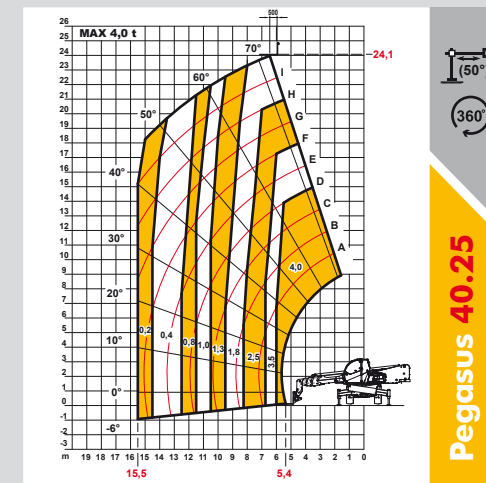
Pegasus 40.25



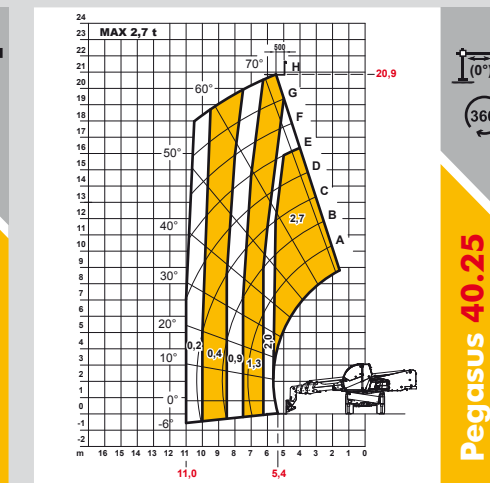
Pegasus 40.25



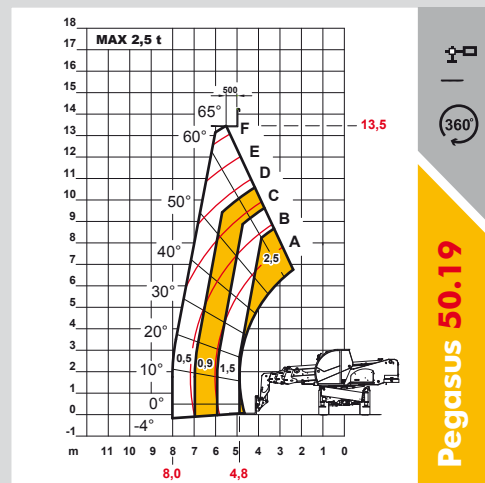
Pegasus 40.25



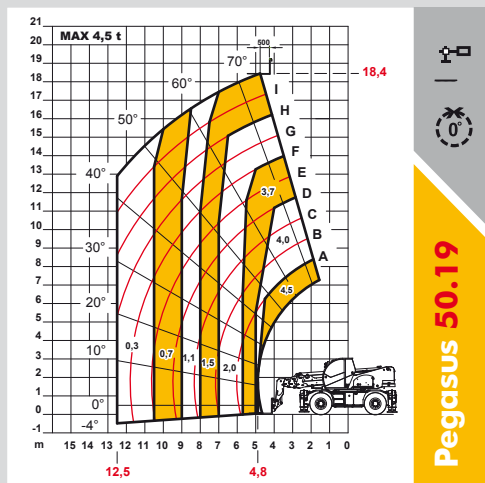
Pegasus 40.25



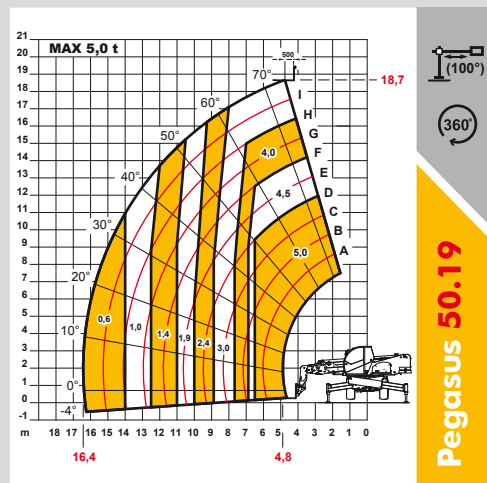
Pegasus 40.25



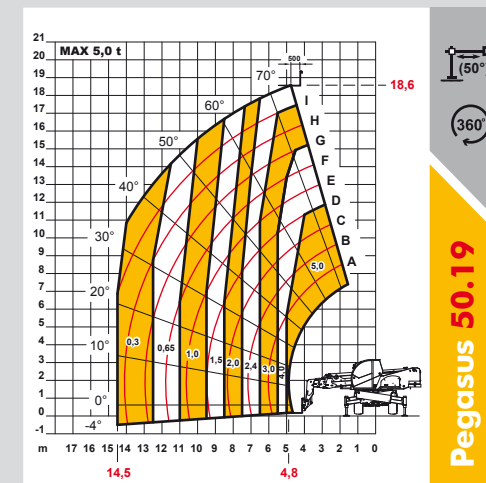
Pegasus 50.19



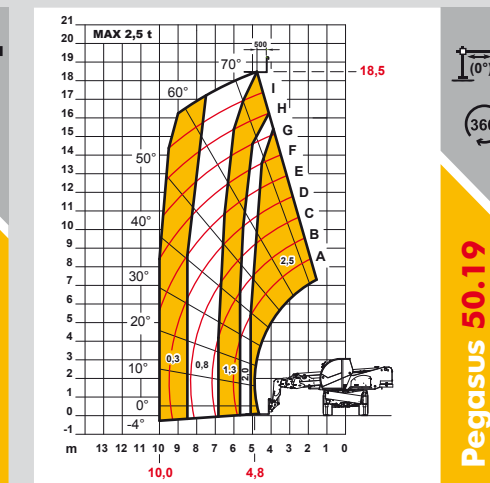
Pegasus 50.19



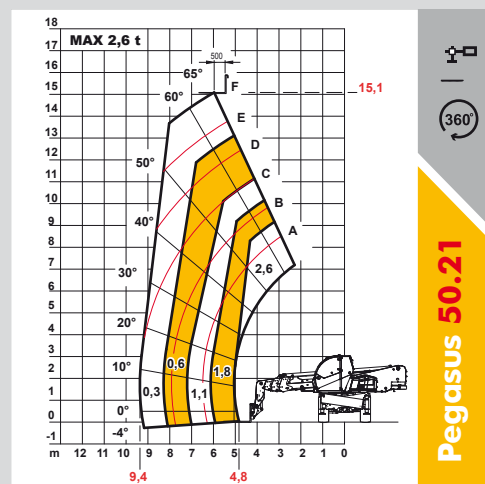
Pegasus 50.19



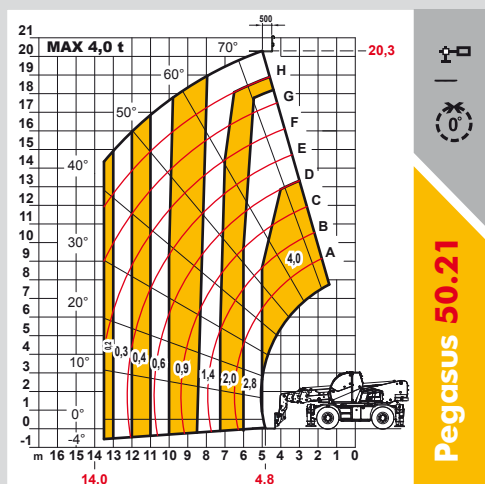
Pegasus 50.19



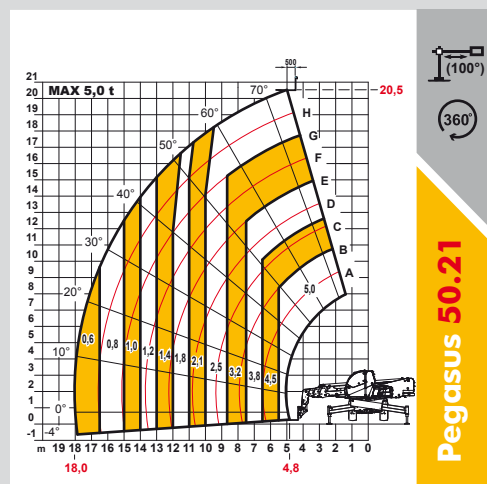
Pegasus 50.19



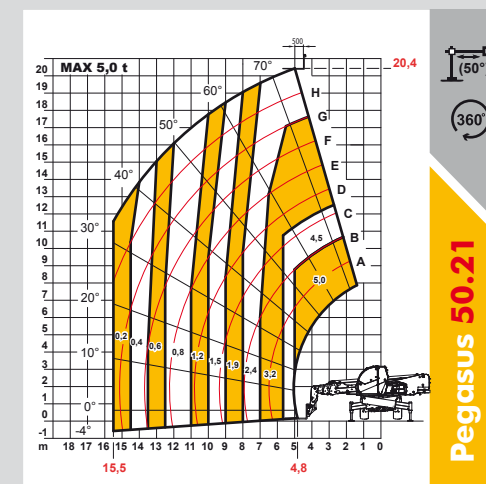
Pegasus 50.21



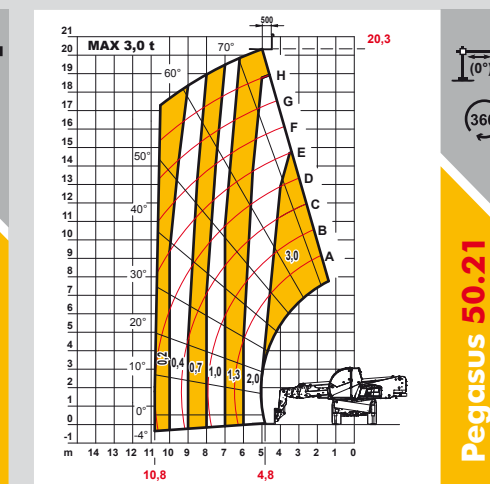
Pegasus 50.21



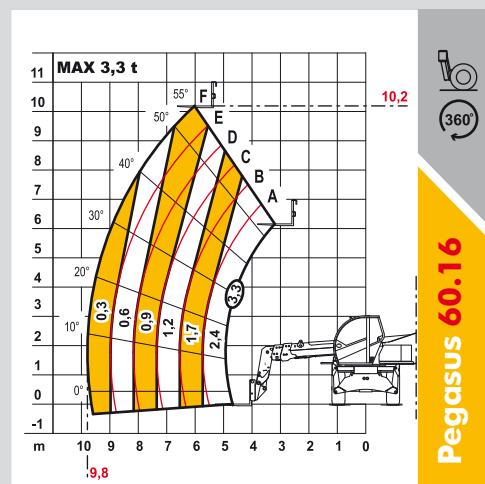
Pegasus 50.21



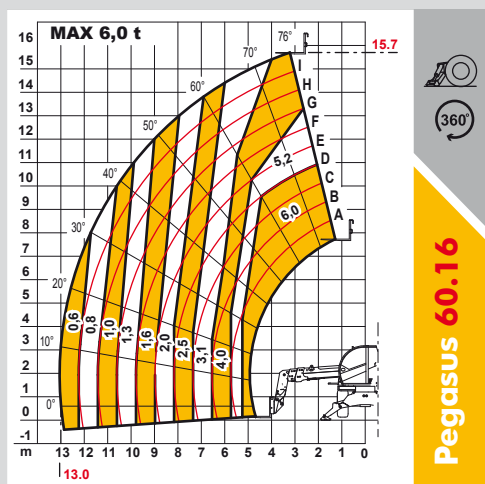
Pegasus 50.21



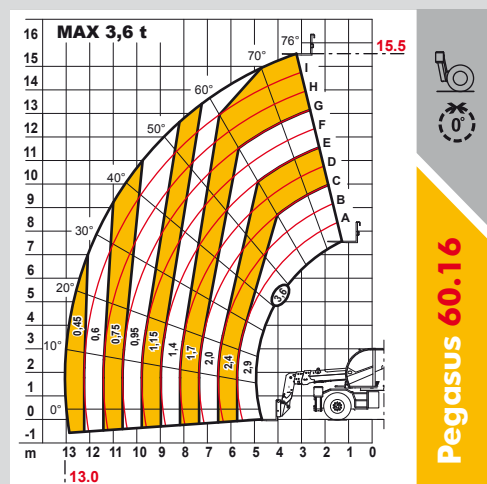
Pegasus 50.21



Pegasus 60.16



Pegasus 60.16



Pegasus 60.16