



DIECI



Dieci S.r.l.
Via E. Majorana, 2-4
42027 - Montecchio Emilia (RE) ITALY
Tel. +39 0522 869611
Fax +39 0522 869798
E-mail: info@dieci.com

AGRI STAR



37.7



37.8



38.10

PERFORMANCE	37.7	37.8	38.10
Maximum capacity (kg)	3.700	3.700	3.800
Maximum lifting height (m)	7,35	7,80	9,75
Maximum horizontal outreach (m)	4,00	4,45	6,45
Outreach at maximum height (m)	0,20	0,35	0,84
Fork swivelling angle	146°	146°	146°
Pull-out force (daN)	5.700	5.700	5.700
Towing force (daN)	7.300	7.300	7.300
Maximum climb angle	40%	40%	40%
Total weight when empty (kg)	7.500	7.600	7.900
Max speed (km/h) *	40	40	40

* = referred to wheels having the maximum allowable diameter

BOOM	37.7	37.8	38.10
Times (when empty/in seconds)			
Lifting	7,3	7,2	8,7
Descending	3,8	3,7	5,0
Extension	5,2	5,5	7,6
Retraction	2,9	3,1	4,6
Forward swivel	2,7	2,7	2,7
Backward swivel	1,7	1,6	1,6

Patented compensation system

ENGINE

Model:	Kubota
Maximum power kW (hp):	85 (114)
Revolutions per minute (rpm):	2600
Operation:	4-stroke diesel
Injection:	Electronic direct, Common Rail
Number and arrangement of cylinders:	4, vertical in line
Displacement (cm ³):	3769
Specific consumption at 2600 rpm (g/kWh)*:	227
Exhaust gas after treatment system	DPF (Stage 3B / Tier 4i)
	Aftercooler turbo compressor
* at maximum power	Liquid cooling system

HYDRAULIC SYSTEM

Gear pump with max speed capacity (lt/1'):	170
Max operating pressure (bar):	240
Distributor control with joystick:	4 in 1 electro-proportional

DIFFERENTIAL AXLES

Steering axles: 2, with planetary reduction gears
Steering types: 4-wheel / transversal / 2-wheel
Front axle: rigid
Rear axle: oscillating
Oil bath service braking on the front axle with servo brake
Negative action parking brake.

REFUELLING (Litres)

Hydraulic system (total)	140
Diesel tank	160

TYRES

Tyres	405/70x20"
* Alternative	18-22.5"
* Alternative	18R22.5"
** Alternative	405/70x24"

OPTIONALS AND ACCESSORIES

A/C; Water heaters; Pneumatic suspension seat; Light on boom head; LED work lights; Quick coupling for accessories; Radio; Anti-theft system; Window protection; Transverse leveling.
(For additional customizations, contact the local dealer)

TRANSMISSION

Hydrostatic transmission with variable displacement pump.
Hydrostatic engine with automatic variation.
Electrical - hydraulic reversing.
Inching pedal for controlled advancement.
Servocontrolled 2-speed gearbox.

STANDARD DEVICES

Anti-tipping device with peorative movement block.
Hydraulic socket for any accessories on the boom head.
Soundproof closed cab, ROPS-FOPS approved, with heating.
Self-blocking differential front axle (limited slip 45%).
Electric window winder.
LCD Display - Digital speedometer.
High efficiency cyclone filter.

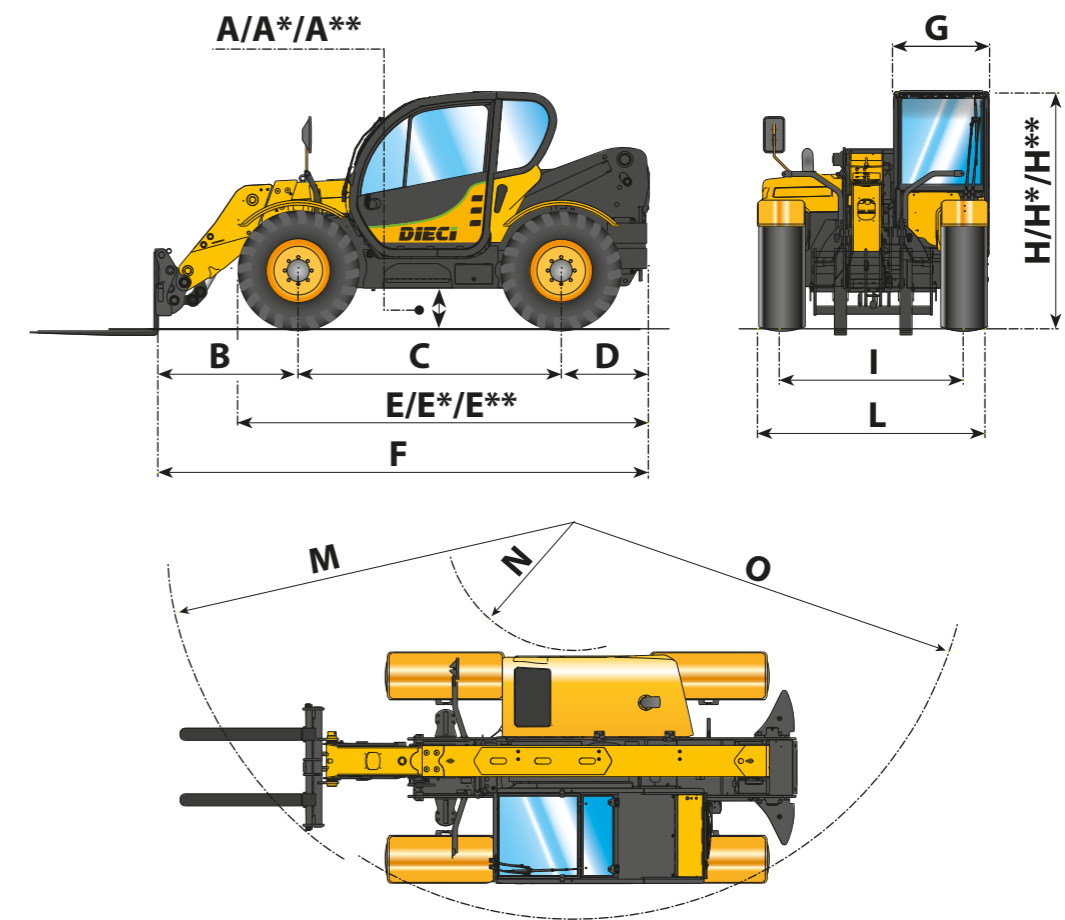
TOWING CAPACITY (on request)

Trailer without brakes (t):	6
Inertia braking (t):	9
Mechanical braking (t):	6
Hydraulic/pneumatic braking (t):	20

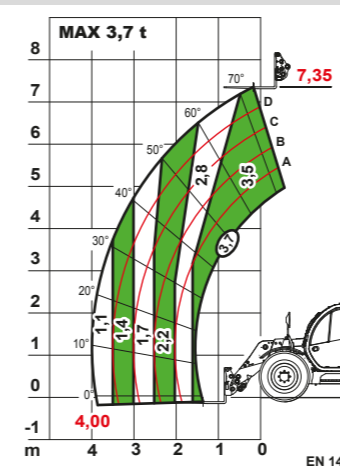
DIMENSIONS	37.7	37.8	38.10
A/A*/A**	340/390*/410**	340/390*/410**	340/390*/410**
B	1410	1640	1440
C	2600	2600	2600
D	970	970	970
E/E*/E**	4080/4125*/4145**	4080/4125*/4145**	4080/4125*/4145**
F	4980	5210	5010
G	940	940	940
H/H*/H**	2310/2360*/2380**	2310/2360*/2380**	2310/2360*/2380**
I	1780	1780	1780
L	2290	2290	2290
M	3700	3870	3730
N	820	820	820
O	3450	3450	3450

Measurements expressed in millimetres

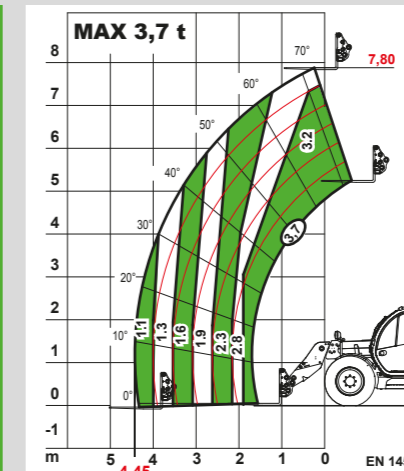
(*) - (**) = Measurements referring to optional wheels



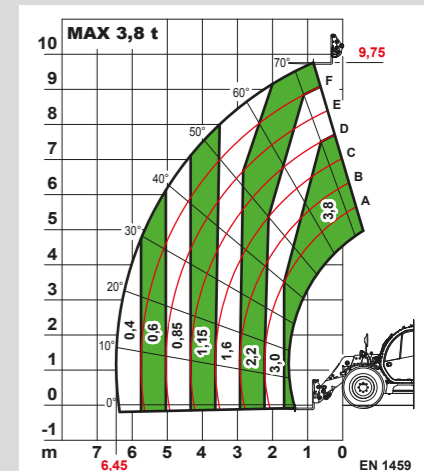
(*) - (**) = Measurements referring to optional wheels



Agri Star 37.7



Agri Star 37.8



Agri Star 38.10