

www.dieci.com



**DIECI**



**Dieci S.r.l.**  
Via E. Majorana, 2-4  
42027 - Montecchio Emilia (RE) ITALY  
Tel. +39 0522 869611  
Fax +39 0522 869798  
E-mail: info@dieci.com

**AGRI STAR EVO2**



40.7



38.8



38.10

PERFORMANCE	40.7	38.8	38.10
Maximum capacity (kg)	4.000	3.800	3.800
Maximum lifting height (m)	7,20	7,60	9,60
Maximum horizontal outreach (m)	3,90	4,30	6,10
Outreach at maximum height (m)	0,60	0,75	0,56
Fork swivelling angle	146°	146°	146°
Pull-out force (daN)	5.700	5.700	5.700
Towing force (daN)	6.000	6.000	6.000
Maximum climb angle	40%	40%	40%
Total weight when empty (kg)	7.800	7.900	8.150
Max speed (km/h) *	40	40	40

\* = referred to wheels having the maximum allowable diameter

BOOM	40.7	38.8	38.10
Times (when empty/in seconds)			
Lifting	7,3	7,2	8,7
Descending	3,8	3,7	5,0
Extension	5,2	5,5	7,6
Retraction	2,9	3,1	4,6
Forward swivel	2,7	2,7	2,7
Backward swivel	1,7	1,6	1,6

Patented compensation system

## ENGINE

Model:	Kubota
Maximum power kW (hp):	85 (114)
Revolutions per minute (rpm):	2600
Operation:	4-stroke diesel
Injection:	Electronic direct, Common Rail
Number and arrangement of cylinders:	4, vertical in line
Displacement (cm <sup>3</sup> ):	3769
Specific consumption at 2600 rpm (g/kWh)*:	227
Exhaust gas after treatment system	DPF (Stage 3B / Tier 4i)
	Aftercooler turbo compressor
* at maximum power	Liquid cooling system

## HYDRAULIC SYSTEM

Gear pump with max speed capacity (lt/1'):	170
Max operating pressure (bar):	240
Distributor control with joystick:	4 in 1 electro-proportional

## DIFFERENTIAL AXLES

Steering axles: 2, with planetary reduction gears
Steering types: 4-wheel / transversal / 2-wheel
Front axle: fixed
Rear axle: oscillating
Oil bath service braking on the 4 wheels and servo brake
Negative action parking brake

## REFUELLING (Litres)

Hydraulic system (total)	140
Diesel tank	160

## TYRES

Tyres	18-22.5"
Tyres	18R22.5"
* Tyres	400/70R24"
** Tyres	460/70R24"

## OPTIONALS AND ACCESSORIES

A/C; Water heaters; Pneumatic suspension seat; Light on boom head; LED work lights; Quick coupling for accessories; Radio; Anti-theft system; Window protection; Transverse leveling.

(For additional customizations, contact the local dealer)

## TRANSMISSION

Hydrostatic transmission with variable displacement pump.  
Hydrostatic motor with automatic speed control and continuously variable transmission (0-40 km/h).  
Electrical - hydraulic reversing.  
Inching pedal for controlled advancement.

## STANDARD DEVICES

Anti-tipping device with pejorative movement block.  
Hydraulic socket for any accessories on the boom head.  
Soundproof closed cab, ROPS-FOPS approved, with heating.  
Self-blocking differential front axle (limited slip 45%).  
Electric window winder.  
LCD Display - Digital speedometer.  
High efficiency cyclone filter.

## TOWING CAPACITY (on request)

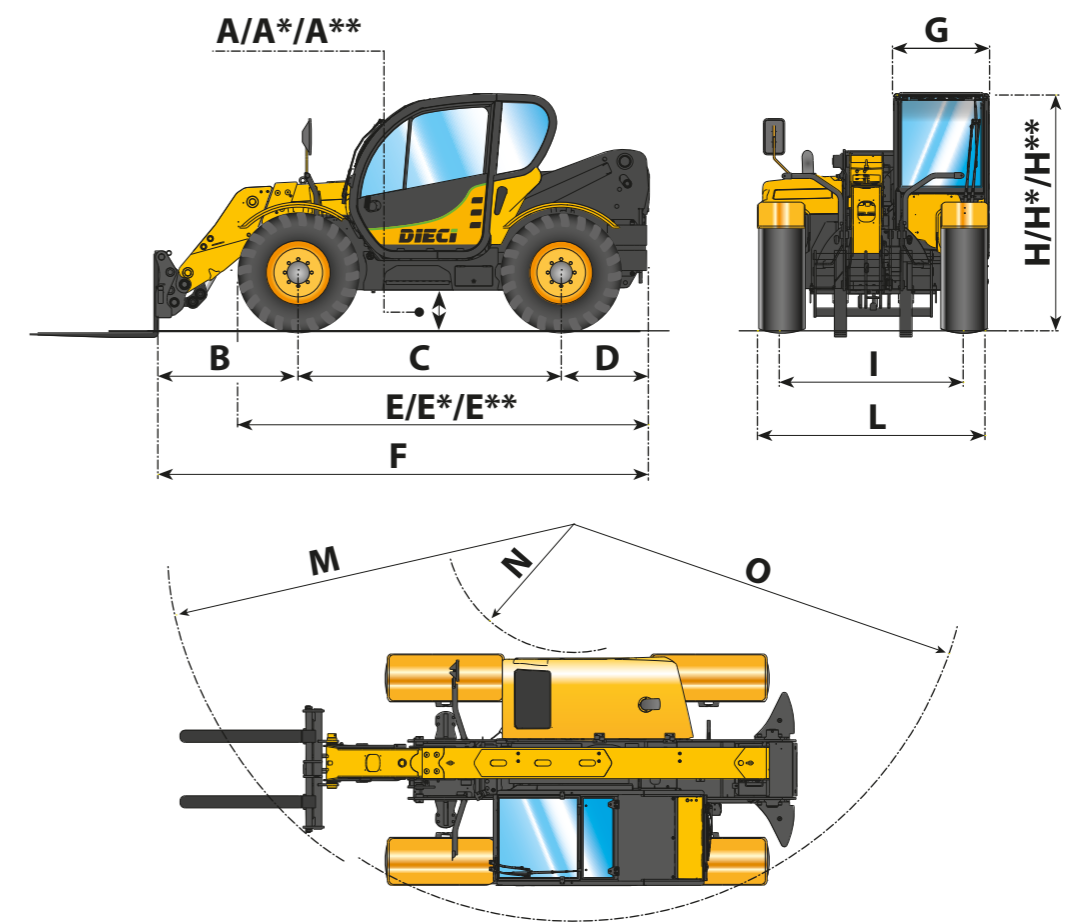
Trailer without brakes (t):	6
Inertia braking (t):	9
Mechanical braking (t):	6
Hydraulic/pneumatic braking (t):	20

## DIMENSIONS

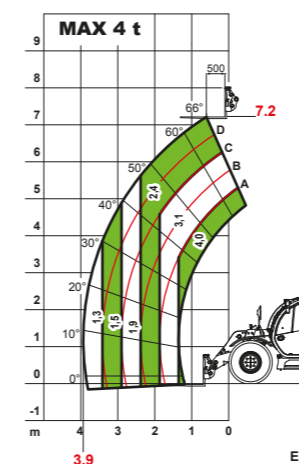
	40.7	38.8	38.10
<b>A/A*/A**</b>	390/410*/450**	390/410*/450**	390/410*/450**
<b>B</b>	1260	1460	1290
<b>C</b>	2750	2750	2750
<b>D</b>	970	970	970
<b>E/E*/E**</b>	4275/4295*/4310**	4275/4295*/4310**	4275/4295*/4310**
<b>F</b>	4980	5180	5010
<b>G</b>	940	940	940
<b>H/H*/H**</b>	2360/2380*/2400**	2360/2380*/2400**	2360/2380*/2400**
<b>I</b>	1780	1780	1780
<b>L</b>	2290	2290	2290
<b>M</b>	3700	4050	3730
<b>N</b>	930	930	930
<b>O</b>	3500	3500	3500

Measurements expressed in millimetres

(\*) - (\*\*) = Measurements referring to optional wheels

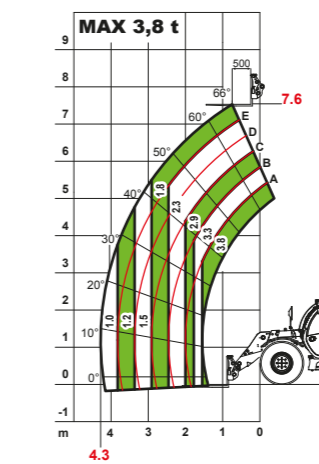


(\*) - (\*\*) = Measurements referring to optional wheels



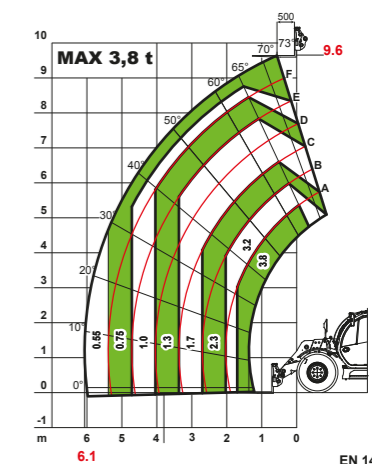
Agri Star 40.7 EVO2

EN 1459



Agri Star 38.8 EVO2

EN 1459



Agri Star 38.10 EVO2

EN 1459