



**DIECI**

**AGRI MAX**





# AGRI MAX

**Surprising lifting capacity**  
**The most compact machine in its class**

Maximum power at the wheels and at the boom, superb handling, precision manoeuvring, absolute comfort.

**Agri Max** is the most powerful and technologically advanced machine in the Dieci range.

The new ecological high-performance engines, with full electronic control, combined with the new VS EVO 2 transmission, deliver all the power you need, while drastically **reducing** fuel consumption by **20%**.

## FOR THE BIGGEST THE STRONGEST





**EVOLUTION**

**AGRI MAX**

**EVO 2**

**COMFORT**

**HI - TECHNOLOGY**

**GREEN CORE**





# WIDE RANGE

## 6 MODELS

HYDROSTATIC - VS  
2 TRANSMISSIONS

8 - 10 m  
BOOM HEIGHT

4500 - 7500 Kg  
MAX CAPACITY

114 - 141 - 152 hp  
CHOICE OF 3 PROPULSION UNITS

AGRI MAX







## TWO TRANSMISSIONS

### VARIO SYSTEM EVO 2

*4 operating modes.*

Allows you to always find the best possible speed/power ratio in any operating conditions, ensuring an unrivalled smoothness and fluidity of movement with millimetric precision.

### HYDROSTATIC

*Powerful and progressive*

Built using components of the latest generation and backed up by the generous performance of the propulsion units, the hydrostatic transmission allows fluid and precise manoeuvres.

## THE STRONGEST

Much more than a technological response to the specific needs of modern agriculture: more strength, more productivity, more comfort, more results.

The most powerful machine in the Dieci agricultural range, an astonishing lifting capacity at high levels for the farming industry.

Agri Max responds readily, precisely and smoothly to the controls, providing an exceptional level of operator comfort and total safety.

## NEW AdBlue and DPF ENGINES

**Stage 3B/Tier 4i** of the latest generation with full electronic control and **fuel consumption reduced by more than 20 %**.

**Max power ratings of 141 and 152 hp** available at 1900 rpm from the 4.5 litre propulsion units, capable of delivering all the available power to the new transmission to guarantee **maximum performance**.

**114 hp** for the 45.8 model, made available by the extremely progressive 3.8 litre engine at 2600 rpm.





# STACKING

# EVOLUTION

## 40 Km/h

FOR RAPID TRANSFERS

## TOWING TRAILERS

# DCS

DESCENT CONTROL SYSTEM

AGRI MAX







## SPEED

40 km/h (limited by regulations) with high tractive power. Rapid acceleration and manoeuvring in total safety.

## UNPARALLELED MANOEUVRABILITY

The use of the VS hydrostatic transmission, combined with the correct operating mode, allows easy, precise manoeuvring. This makes for improved performance in **stacking** operations.

The combined use of the electronic throttle and inching pedal allow the vehicle to be driven at **slow, controlled speeds**, even with the boom at maximum speed.

## MAXIMUM PERFORMANCE

The perfect balance between two the ultra-reliable speed and temperature control systems makes for exceptional performance when **towing** or working with a bucket.

In **silaging** work, you can count on **high traction at low speeds on steep slopes**.

The innovative electronic engine/transmission control system allows **progressive speed control in all working conditions**.

## Stage 3B/Tier 4i ENGINES with AdBlue or DPF:

The brand new Turbo Aftercooled Common Rail Diesel engines with full electronic control. The SCR emissions control system used on the entire range **means lower fuel consumption and longer intervals between services**. 114 hp versions are equipped with a Diesel Particulate Filter (DPF).

## DCS Descent Control System

New servo-assisted valves allow the boom to be lowered at low revs and an instantaneous response to the controls.

A further **reduction in fuel consumption** of up to 10%.







**COMFORT**

**ROPS-FOPS**

**360°**

**VISIBILITY**

**ON-BOARD  
COMPUTER**

**A/C**







## ABSOLUTE COMFORT

It's the first thing you notice on board an Agri Max. The intelligently designed control layout makes the machine simple, intuitive and comfortable to use.

Unparalleled technology with the new **on-board computer**.

The display shows clearly and in real time all the information necessary to operate the vehicle.

The **semi-automatic air conditioning system** with 7 outlet vents allows perfect air circulation inside the cabin. The openable roof hatch and rear window, standard on all models, allowing improved ventilation while working.



With the **widest** cab door on the market, accessing the driving position is easy and safe.

Inside the cab everything has been designed in order to make work easier for the operator.

Soundproofing, **adjustable steering wheel** in both height and reach, **electric windows**, storage compartments and a range of accessories including **air conditioning**, radio, sunblind and ergonomic seat with pneumatic suspension ensure total operator comfort.

The windscreen wiper also cleans the glass at the top of the cab.

A wide mesh safety grille and one of the highest driving positions in its class provide an unrivalled visibility of **360°**.





# HANDLING

EASY DUMPING

NEW  
JOYSTICK

EASY RIDE

AGILITY

INCHING PEDAL







## ALL THE CONTROLS IN ONE HAND

*with absolute precision.*

The 4-in-one joystick, standard equipment on all models, provides integrated control of the vehicle. The integral travel direction control allows rapid shuttling between forward and reverse.

The compensated flow sharing control valve allows simultaneous operation of all movements.

## EASY DUMPING

The ingenious **slewing** system is specially designed to increase the operating arc, which is particularly useful when dumping with the boom raised.



## STRENGTH AND AGILITY

The high-efficiency steering system has the **smallest turning circle in its class** and always **feels light** and responsive.

Steering mode change facilitated by the **self-aligning** wheels system.

**Plenty of power for handling very heavy loads** without compromising manoeuvrability.

## INCHING PEDAL

An essential control when movements must be slowed right down or stopped and maximum hydraulic power is required for the equipment in use.

The **servo-assisted service brake** ensures safe and modulated braking, while reducing stress on the pedal.

## EASY RIDE

Developed by Dieci design engineers, the sophisticated air suspension system installed on the boom (optional) drastically reduces oscillation when travelling over rough terrain.





# GREEN CORE

**-20%**  
FUEL  
CONSUMPTION

**TFT DISPLAY  
USER INTERFACE**

**SCR**

(SELECTIVE CATALYST REDUCTION)

**STAGE 3B / Tier 4i  
NEW ENGINES**







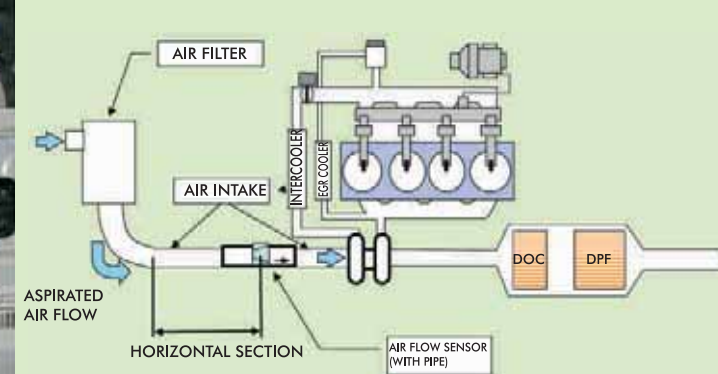
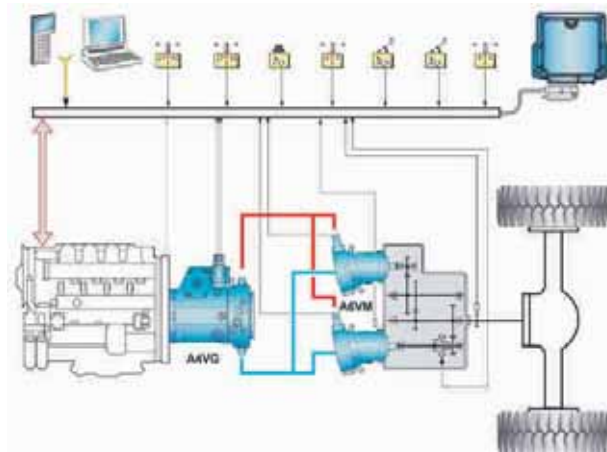
## ON-BOARD COMPUTER

Advanced instrumentation with a large **color display** and intuitive icon-based interface provides more comprehensive and detailed information.

All machine functions are managed via the **CANBUS system**, which provides an improved response in rapid time.

Constant monitoring of operating conditions and in-depth diagnostics using real-time data.

For VS versions, integrated electronic management of the engine and transmission provides **fuel savings of up to 20% and a corresponding reduction in CO, CO<sub>2</sub> and NO<sub>x</sub> emissions.**

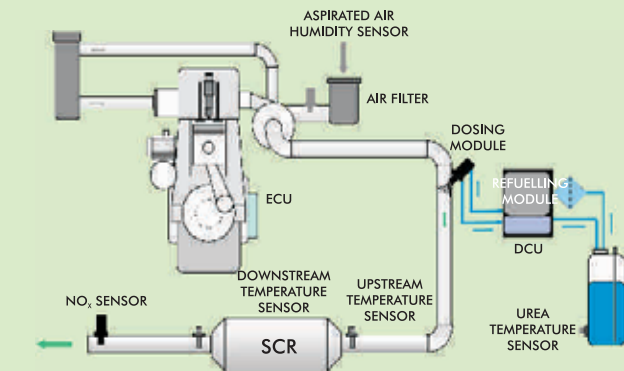


## DIECI FOR THE ENVIRONMENT

*A leap forward into a cleaner, more sustainable future.*

Dieci has chosen full electronic management of fuel injection, turbo pressure, torque, engine rpm, engine brake, starter safety release, monitoring, diagnostics and the **SCR (AdBlue)** system for the treatment of exhaust emissions.

**Improved performance, reduced fuel consumption**, less contamination of the engine oil, longer intervals between services and a durable SCR system, which will last at least as long as the engine.







**VS EVO 2**

**LOADER**

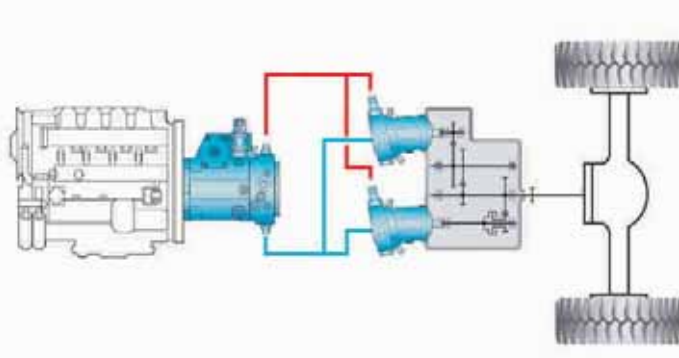
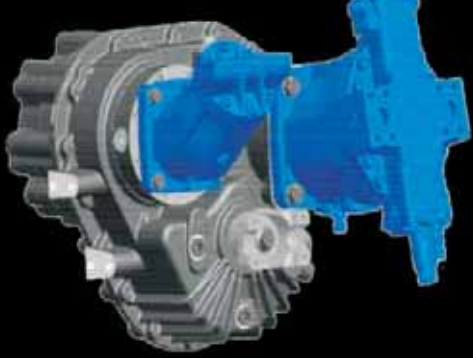
**CREEPER**

**ECO**



**NORMAL**





## VS EVO 2 DUAL MOTOR

An ingenious way to fully exploit all the horsepower made available by the generous performance of the propulsion unit.

The hydrostatic pump combined with two hydraulic piston motors forms the heart of the transmission.

The electronic control system that manages power delivery disconnects one of the motors on reaching high speeds, while maintaining the power delivered to the wheels unchanged, thereby **reducing fuel consumption by as much as 20%**.



## 4 OPERATING MODES

The best performance in all work situations.

**NORMAL:** suitable for road transfers, with a top speed of 40 km/h and superior towing capacity.

**ECO:** the perfect way to obtain considerable fuel savings.

**LOADER:** ideal per loading and bucket work, providing greater controls sensitivity so that power can be delivered safely to the attachment, for a reduced top speed.

**CREEPER:** the perfect combination power delivery and manoeuvring speed, thereby avoiding the typical problems of foundering (silage).





# TECHNOLOGY

QUICK DEP

CAMERA

160 - 170 - 185 l/l'

LARGER  
TANKS

COMPENSATION CYLINDER







## HYDRAULIC SYSTEM

The high-capacity hydraulic pump, which provides flow rates of **160, 170 or 185 l/1'**, helps speed up boom movements, **reducing operating times by up to 25%** compared with previous models. VS models are equipped as standard with a **LOAD SENSING** pump.

The **compensation cylinder (PATENTED BY DIECI)**, located inside the lifting ram, ensures that the load on the boom is balanced at all times, thereby improving durability.

## QUICK DEP

System for depressurising the hydraulic service couplers: makes the connection of implements easy and effortless.

## DESIGN

It has always been a feature of DIECI machines, but never as an end in itself.

The **NEW BOOMS** are designed and constructed to meet increasingly tougher demands.

## MAINTENANCE

All the technical improvements adopted have created extra space **for larger tanks** for fuel, oil and AdBlue.

Longer working periods, fewer interruptions and **increased productivity** with the new air filters and **LONG LIFE** oil filter.

## CAMERA MAXIMUM CONTROL

The cameras (optional) provide a millimetric view on the screen facilitating the load and movement operations.

## REVERSIBLE FANS

Every radiator can be equipped hydraulic reversible fans which allow significant fuel savings and makes cleaning in dusty and dirty environments much easier and quicker.





# SAFETY

## ROPS-FOPS

## FRAME

## TRANSVERSE LEVELING

## MOMENT LIMITER

AGRI MAX





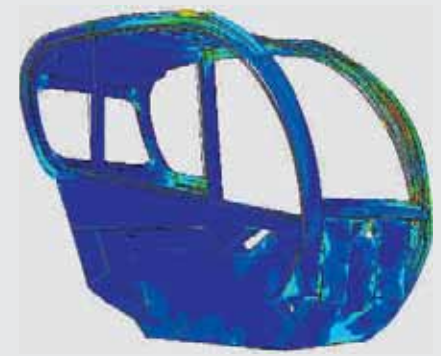


## MOMENT LIMITER

Every Dieci machine is equipped with a control device that analyzes vehicle stability in real time and inhibits any aggravating movements when the pre-set safety limits are reached.

The transverse **leveling device** (optional) for inclination angles of up to  $\pm 10^\circ$ , means you can work in total peace of mind, even on rough ground.

The **Joystick** is equipped with a **capacitive deadman sensor** which, combined with the operator presence sensor in the seat, prevents accidental operation.



**ROPS-FOPS approved** cab designed with safety cell to prevent deformation in the event of vehicle overturn or a heavy load falling on the cab.

## STURDY FRAME

The frame is one of the defining characteristics of the Agri Max; all welds are performed by automated robots to ensure rigidity and total safety, even under high-stress conditions.

The machine is thus **totally free of vibration and flexure**.





# MADE IN ITALY





# FOR THE WORLD

**DIECI**, with more than half a century of experience and continuous development, achieves the **perfect vehicle** for every need.

Our **Technical Assistance Service** maintains a world-wide presence through an extensive network of authorised service centres and dealers.

The automated spare parts warehouses and the direct assistance with the user, provide a very short time of intervention.

**DIECI**, within just a few hours, can provide both spare parts and qualified staff worldwide.

## Warranty

**DIECI** offers customized warranty extension packs for components and durability.





# TECHNICAL SPECIFICATIONS

PERFORMANCE	45.8	60.9	60.9 VS	65.8	65.8 VS	75.10
Maximum capacity on outriggers (kg)	-	-	-	-	-	7.500
Maximum capacity on tires (kg)	4.500	6.000	6.000	6.500	6.500	7.200
Maximum lifting height (m)	7,90	8,60	8,60	7,70	7,70	9,65
Maximum horizontal outreach (m)	4,45	4,90	4,90	4,20	4,20	5,40
Outreach at maximum height (m)	0,30	0,45	0,45	0,60	0,60	0,70
Fork swiveling angle	134°	144°	144°	144°	144°	134°
Pull-out force (daN)	5.700	7.500	7.500	7.500	7.500	8.750
Towing force (daN)	7.300	7.600	8.800	7.600	8.800	8.400
Maximum climb angle	40%	40%	40%	40%	40%	40%
Total weight when empty (kg)	8.800	11.100	11.100	10.900	10.900	12.100
Maximum speed (km/h)	40	40	40	40	40	40

\* referred to wheels having the maximum allowable diameter

BOOM	45.8	60.9	60.9 VS	65.8	65.8 VS	75.10
Times: empty (seconds)						
Lifting	13,0	13,4	11,0	12,8	10,5	15,1
Descent	8,9	8,4	6,9	8,0	6,6	9,9
Extension	6,8	7,8	6,4	6,7	5,5	10,4
Retraction	3,8	3,4	2,8	3,0	2,4	4,1
Forward swiveling	3,3	3,5	2,8	3,5	2,8	4,6
Reverse swiveling	2,0	2,3	1,9	2,3	1,9	2,0

Patented compensation system

DIMENSIONS	45.8	60.9	60.9 VS	65.8	65.8 VS	75.10
A/A*/A**	440/480*	395/470*/445**	395/470*/445**	395/470*/445**	395/470*/445**	440
B	1480	1505	1505	1155	1155	1630
C	2600	2800	2800	2800	2800	2950
D	860	1050	1050	1050	1050	1330
E/E*/E**	4000/4050*	4435/4520*/4495**	4435/4520*/4495**	4435/4520*/4495**	4435/4520*/4495**	4820
F	4940	5355	5355	5005	5005	5910
G	940	940	940	940	940	940
H/H*/H**	2460/2500*	2495/2570*/2545**	2495/2570*/2545**	2495/2570*/2545**	2495/2570*/2545**	2490
I	1910	1920/1975*/1950**	1920/1975*/1950**	1920/1975*/1950**	1920/1975*/1950**	1920
L	2310	2390/2420*/2450**	2390/2420*/2450**	2390/2420*/2450**	2390/2420*/2450**	2380
M	4080	4550	4550	4350	4350	4730
N	1260	1700	1700	1700	1700	1700
O	3920	4400	4400	4400	4400	4400

dimensions in millimetres - (\*) - (\*\*) = Dimensions refer to optional wheels

REFUELING (liters)	45.8	60.9 - 60.9 VS 65.8 - 65.8 VS	75.10
Hydraulic system (total)	155	160	160
Diesel tank	105	125	105
AdBlue tank	/	27	35

HYDRAULIC SYSTEM	45.8
Gear pump with max. capacity (l/1')	170
Max operating pressure (bar)	240
Joystick control of hydraulic control valve	4 in 1

HYDRAULIC SYSTEM	60.9 65.8 - 75.10
Gear pump with max. capacity (l/1')	160
Max operating pressure (bar)	250
Joystick control of hydraulic control valve	4 in 1

HYDRAULIC SYSTEM	60.9 VS 65.8 VS
Gear pump with max. capacity (l/1')	200
Max operating pressure (bar)	250
Joystick control of hydraulic control valve	4 in 1

ENGINE	45.8	60.9 - 60.9 VS - 65.8 65.8 VS - 75.10
		96 kW 103 kW
Model	Kubota	FPT
Nominal power at 2600 rpm kW (hp)	85 (114)	/
Nominal power at 2200 rpm kW (hp)	/	96 (130) 103 (140)
Peak power at 1900 rpm kW (hp)	/	105 (141) 113 (152)
Revolutions per minute (rpm)	2600	2200 2200
Operation		4-stroke Diesel
Injection		Electronic Direct, Common Rail
Number and arrangement of cylinders		4, vertical in line
Displacement (cm <sup>3</sup> )	3769	4500 4500
Specific consumption (g/kWh)	227	208 208
Exhaust gas after-treatment system	DPF	SCR SCR

\* at maximum power Stage 3B/Tier 4i

Turbo compressor After-cooler

Liquid-cooling system

DIFFERENTIAL AXLES
Steering axles: 2 with planetary reduction gears
Type of steering: 4 wheels / transversal / 2 wheels
Front axle: rigid (self-levelling on request)
Rear axle: oscillating
Service braking with oil bath on the 4 wheels with double hydraulic system and servo brake
Negative action parking brake

TIRES	45.8	60.9 - 60.9 VS 65.8 - 65.8 VS	75.10
Tires	405/70x20"	18-22.5"	18R22.5"
*Alternative	405/70x24"	17,5-25"	18-22.5"
**Alternative	18-22.5"	500/70R24"	/
**Alternative	18R22.5"	/	/

TRANSMISSION
Hydrostatic transmission with variable displacement pump
Hydrostatic engine with automatic adjustment
Electro-hydraulic forward/reverse shuttling
Inching pedal for controlled forward movement
Servo controlled 2-speed gearbox

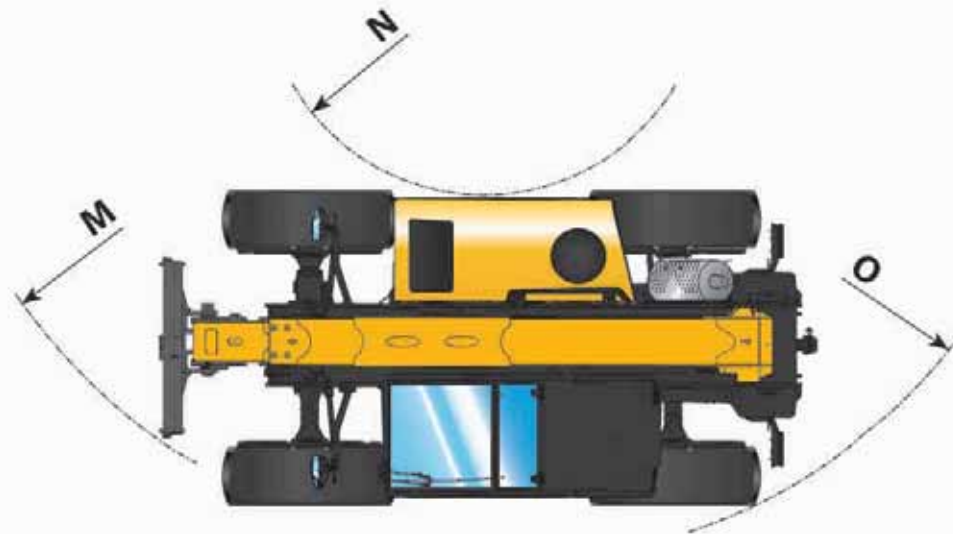
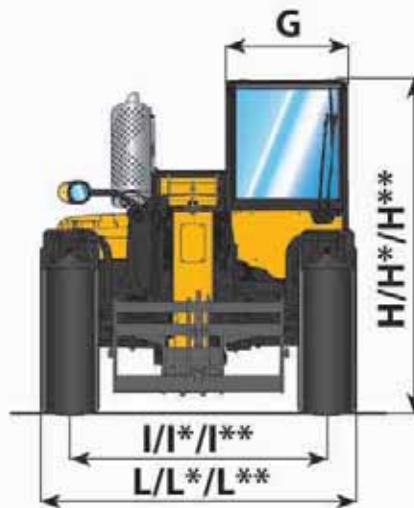
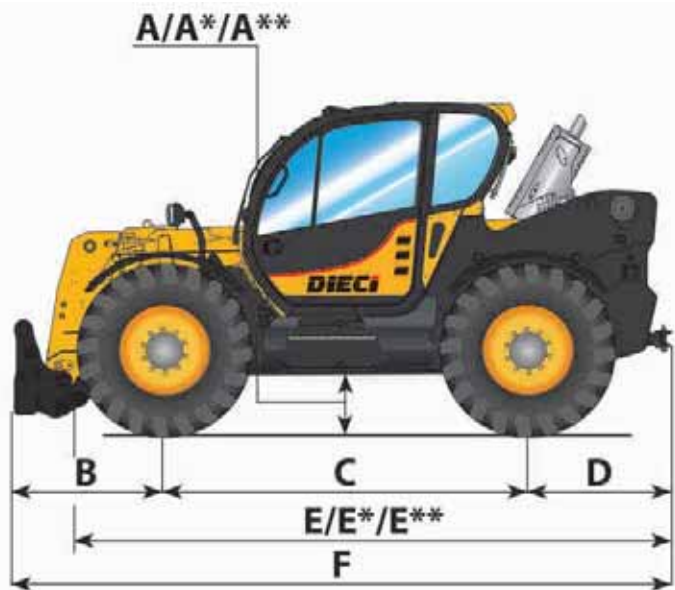
VS TRANSMISSION
Vario System EVO 2 hydrostatic transmission
Electrohydraulic shuttling
Drive Mode: Automotive / Loader / Creeper / Eco
Electronic inching pedal

OPTIONALS AND ACCESSORIES	60.9 - 60.9 VS 65.8 - 65.8 VS
A/C	For these models only
Water Heaters	Type approved as agricultural tractor
Seat pneumatic suspension	Towing hook
Led light on boom head	Hydraulic and pneumatic braking
Quick coupling for accessories	Rear hydraulic service coupler
Radio	Reversible fan
Anti-theft system	Boom suspension
Window protection	
(for further customizations, contact your local dealer).	

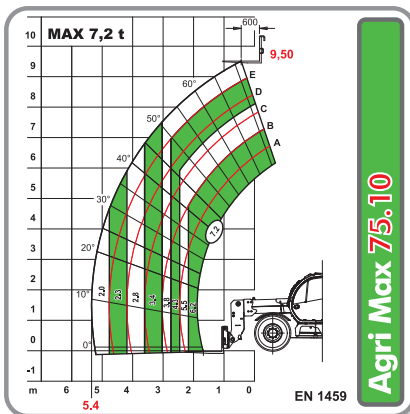
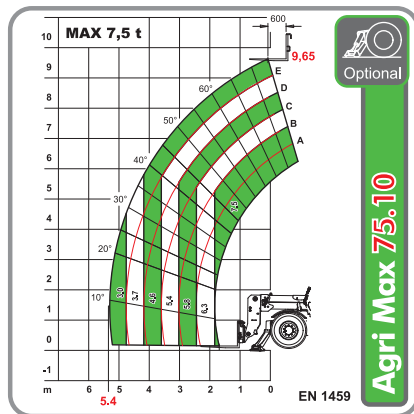
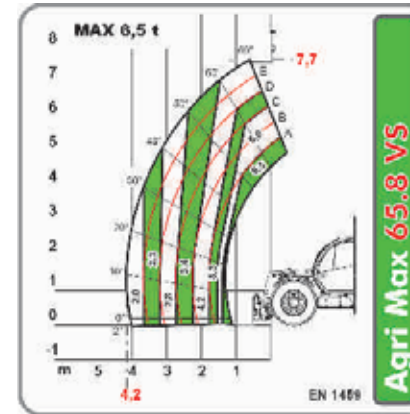
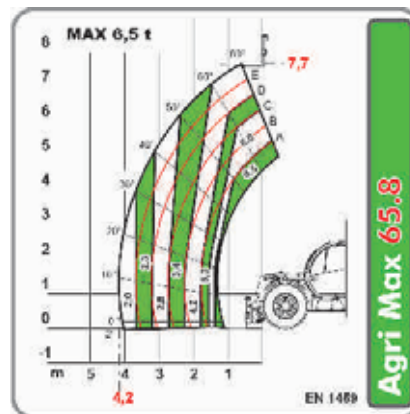
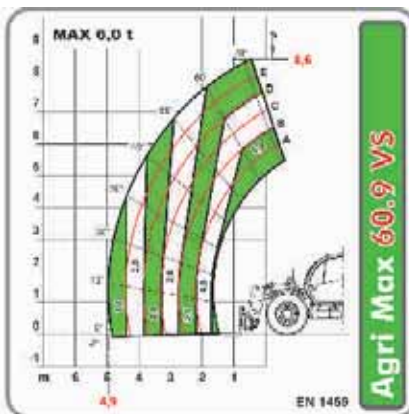
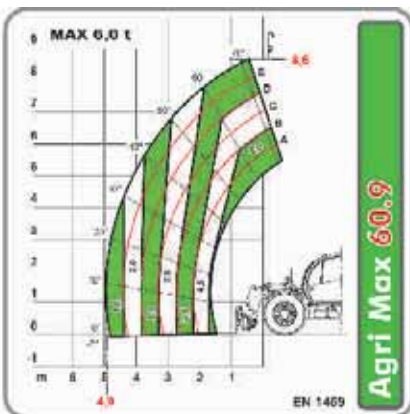
TOWING CAPABILITY (on request)	60.9 - 60.9 VS 65.8 - 65.8 VS
Unbraked trailer (t):	6
Inertia braking (t):	9
Mechanical braking (t):	6
Hydraulic/air braking (t):	20

STANDARD EQUIPMENT
Anti-rollover device with inhibition of aggravating movements
Hydraulic coupler for accessories on boom head
Soundproofed, type-approved ROPS - FOPS enclosed cab, with heating
Self-locking differential on front axle (limited slip 45%)
Electric windows
Colour LCD screen
Grid heater





A\* - E\* - H\* = Dimensions refer to optional wheels



The photographs in this catalogue purely indicative due to the continuous drive for evolution and research



